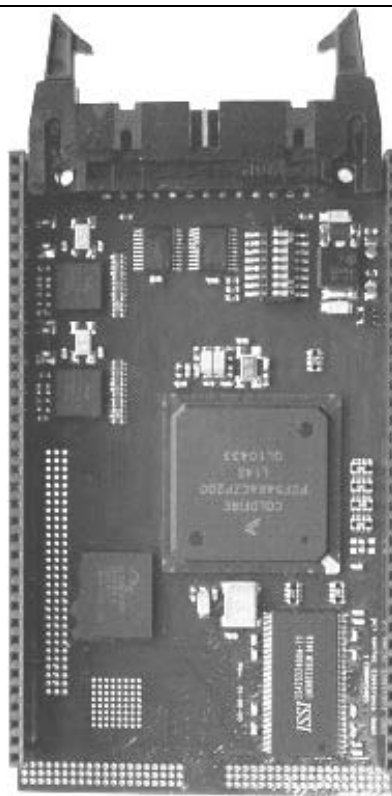


COBRA5485 Embedded Processor Module

Product Information 1.0: 2005/01/18

COBRA5485 Features:

- ColdFire MCF5485 Processor
- 200 MHz, 308 MIPS
- 32 MByte Flash
(optional up to 128 MByte)
- 16 MByte SDRAM
(optional up to 32 MByte)
- 2x 10/100 MB Ethernet
- Encryption Hardware
(AES, 3DES, RNG ...)
- 4x SCI (UART)
- 2x CAN Interface
- QSPI with 4 Chip Selects
- I²C Interface
- Real Time Clock with Interrupt
- 32-Bit Processor Bus
- 32-Bit PCI Bus
- Selectable Boot Configuration
- dBUG and Linux OS Support
- Single 3.3 V Operating Voltage
- Compatible to COBRA5282



Original Size 58 x 97 mm

COBRA5485 Interfaces:

Standard I/O Interfaces

- Two Rows per 36 Pins (2.54 mm)
- All Ports and Pins are connected to the Standard I/O Interface

32-Bit Processor Bus Interface

- Two 40-Pin Fields (1.27 mm)
- Various Connector Options

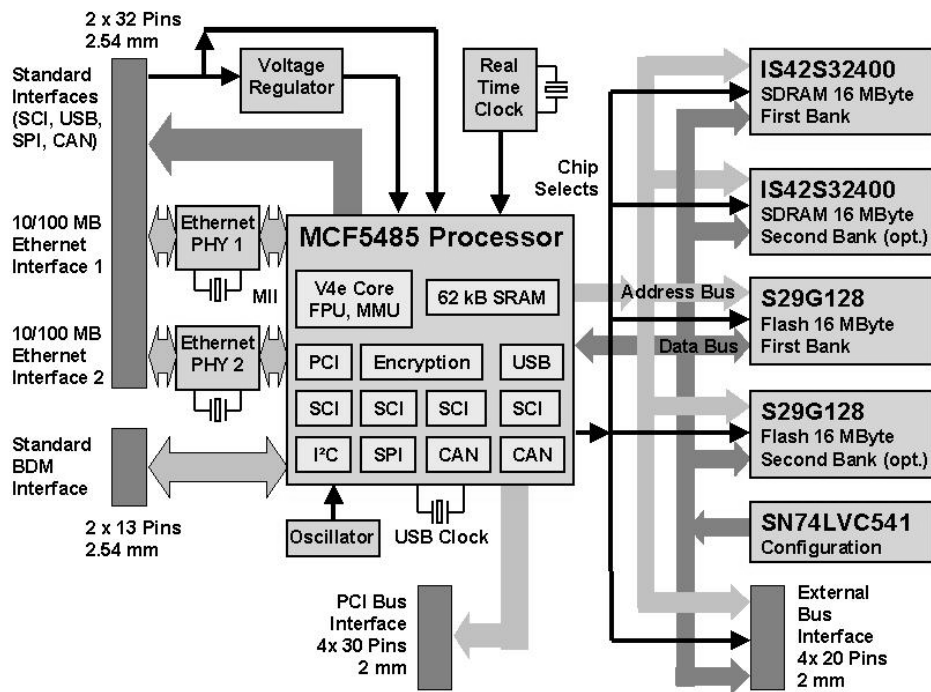
32-Bit PCI Bus Interface

Standard BDM Interface
(2x 13 Pins, 2.54 mm)

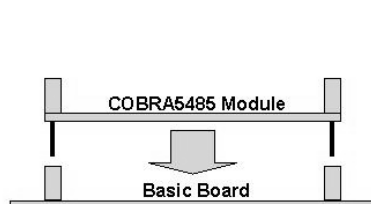
Typical Applications:

- Automation
- Industrial Control
- Measurement Equipment
- Data Logging
- Embedded Internet
- CAN to Ethernet Interface
- RS232 to Ethernet Interface
- RS485 to Ethernet Interface
- Education
- Training and Seminars
- Software Development

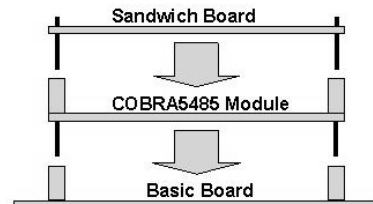
COBRA5485 Embedded Processor Module Block Diagram



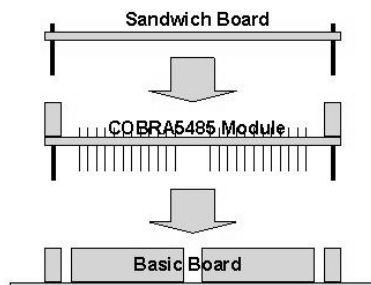
Connection Options of the COBRA5485 Processor Module



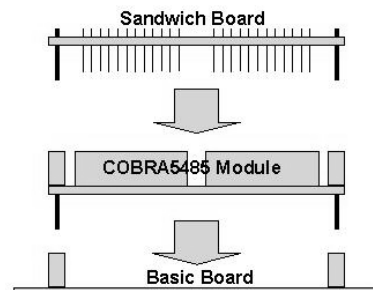
a) COBRA5485 Module is plugged onto the Basic Board



b) Sandwich Board is plugged onto the COBRA5485 Module

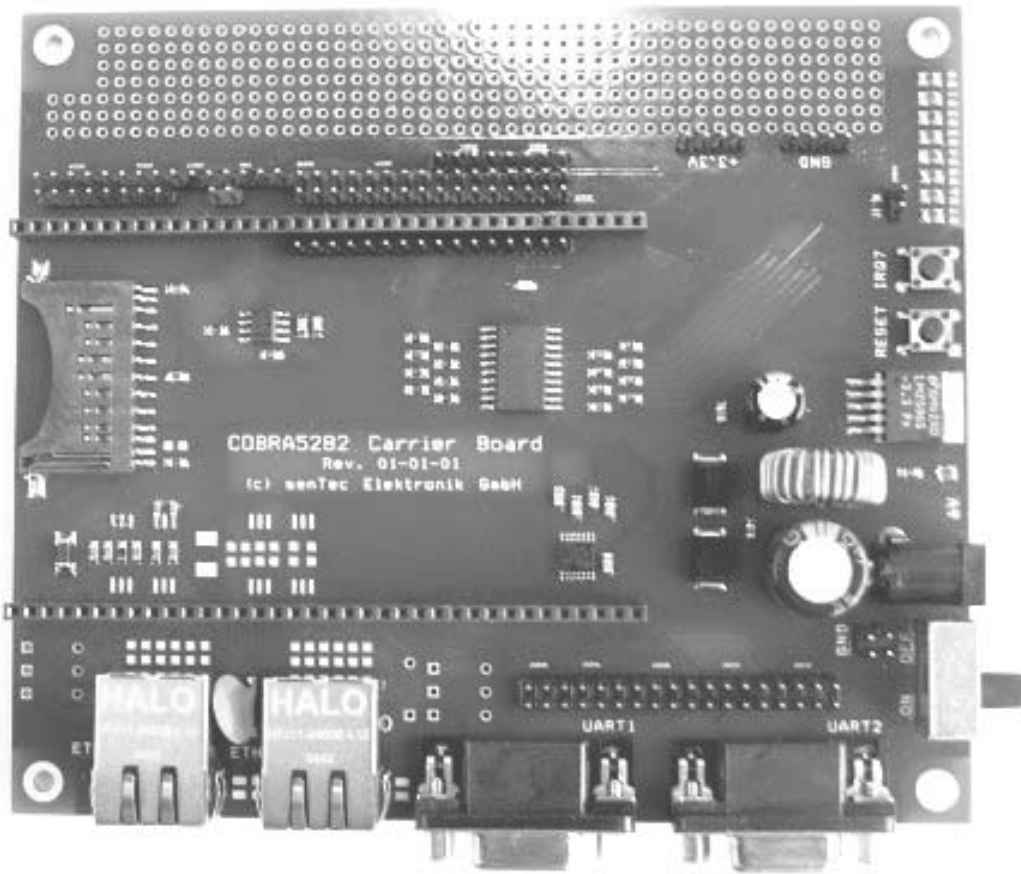


c) Processor Bus of the COBRA5485 Module is plugged on the Basic Board



d) Sandwich Board is plugged on the Processor Bus of the COBRA5485 Module

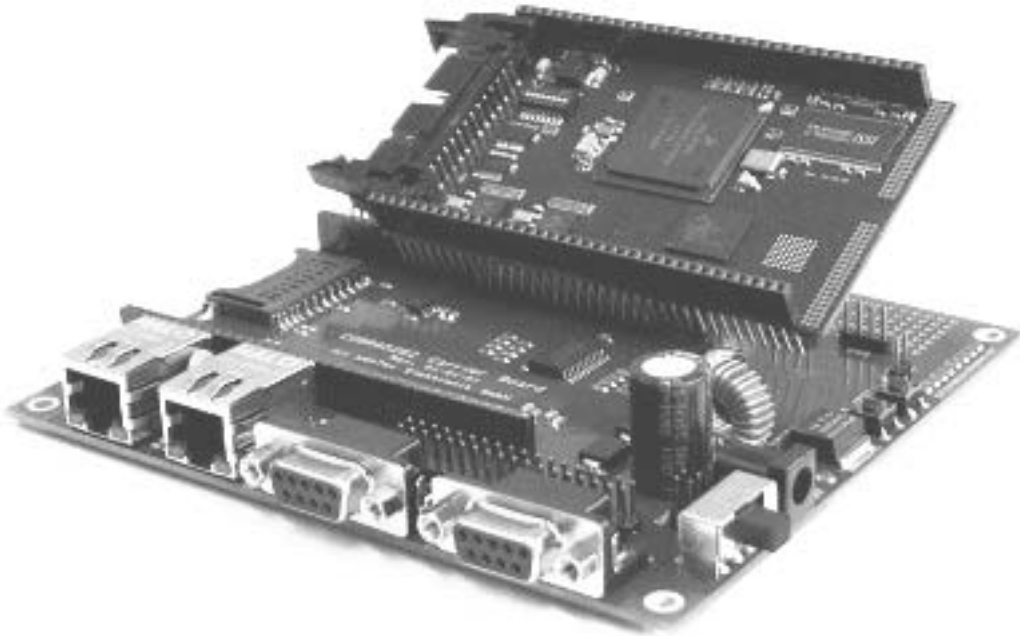
Carrier Board for the COBRA5485 Processor Module



Size approximately 120mm x 110mm
(Two Ethernet connectors stuffed)

- Carrier Board Features:
- Connectors for the Standard I/O Interfaces of the COBRA5485 Processor Module
 - Two RJ45 Ethernet Interfaces
 - Two RS232 Interfaces with Driver
 - CAN Driver and Interface
 - Multi Media Card Interface
 - Interface connectors for SPI, I²C
 - Eight driven LEDs
 - Reset Switch
 - Switching Power Supply 6 - 12 V Input

Starter Kit for the COBRA5485 Processor Module



- The Starter Kit contains:
- COBRA5485 Embedded Processor Module
 - Carrier Board for the COBRA5485 Module
 - Documentation on CD

Additional CD with Linux distribution and tool chain for software development available as delivery option.

© Copyright senTec Elektronik GmbH 2005. All rights reserved.

senTec Elektronik GmbH
Ehrenbergstr. 11
98693 Ilmenau, Germany
<http://www.sentec-elektronik.de>

Phone: +49 3677 66 83 41
Fax: +49 3677 66 83 48
Email: info@sentec-elektronik.de

Product status: development finished, product in qualification