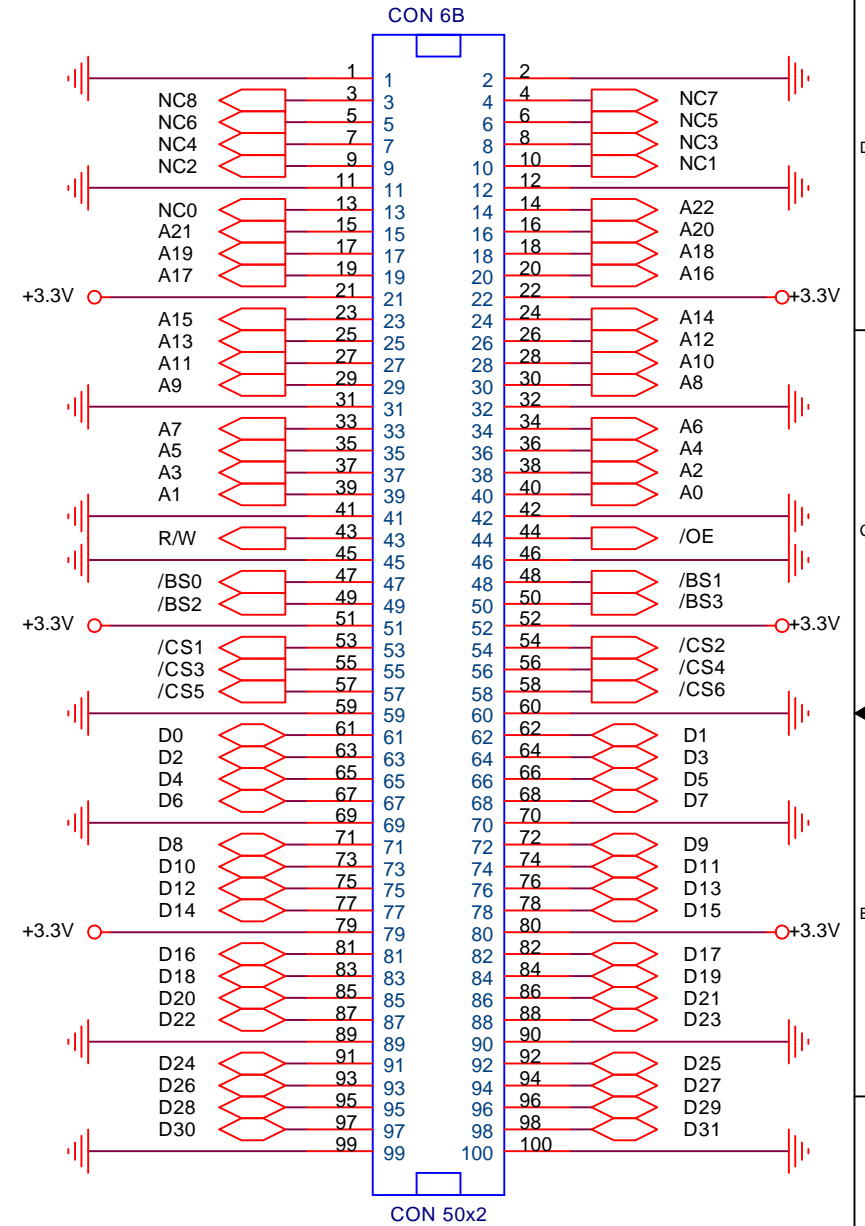
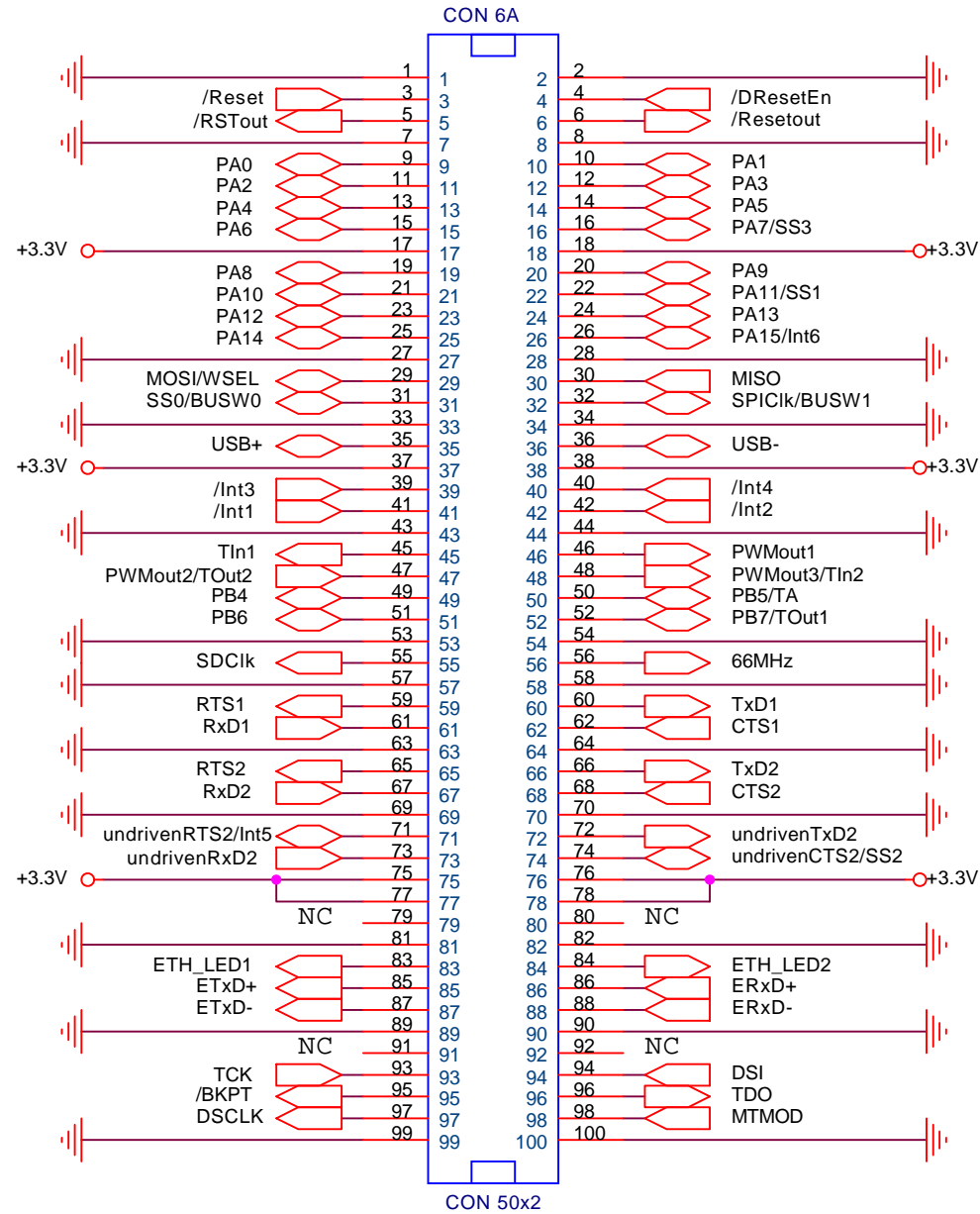


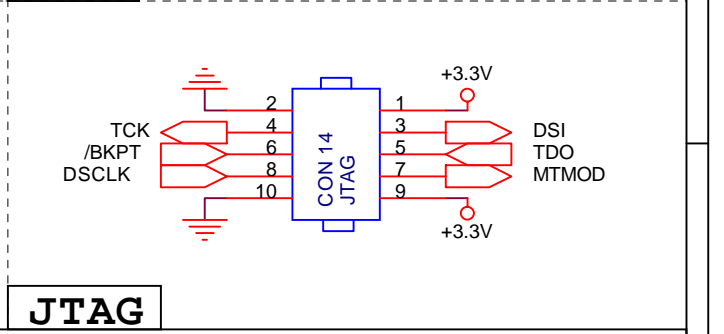
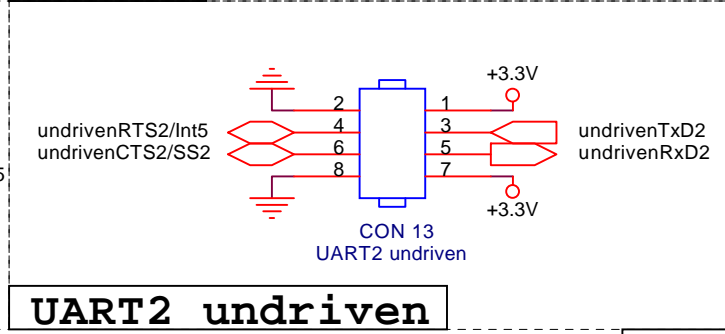
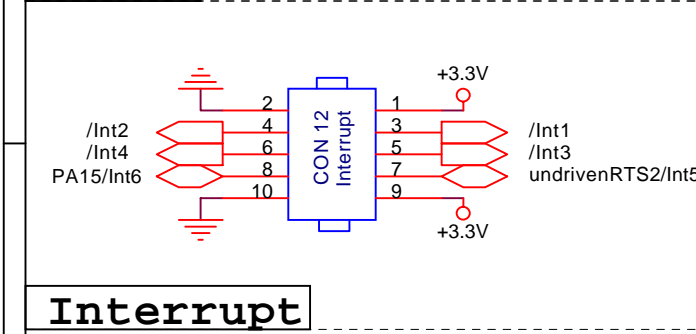
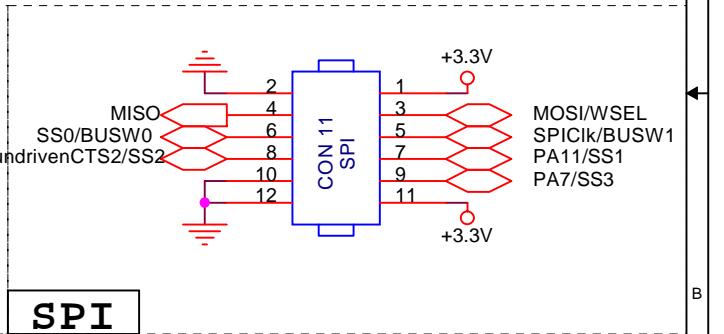
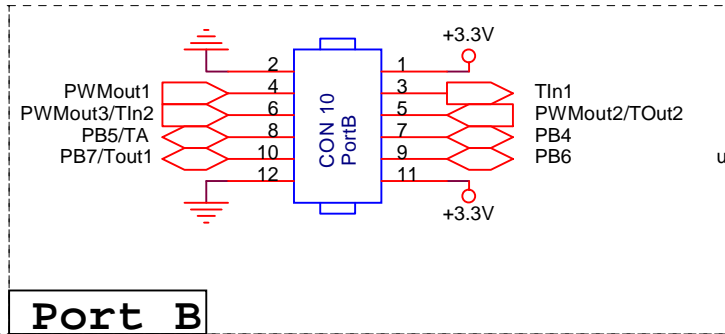
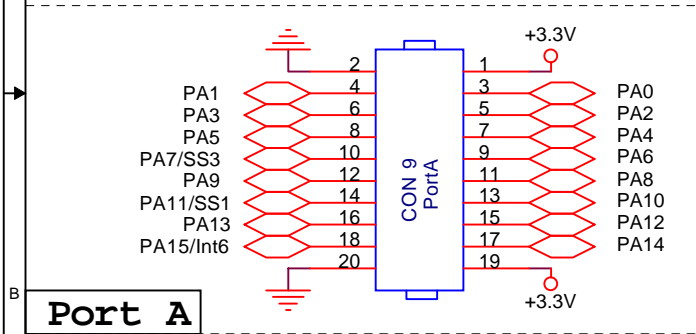
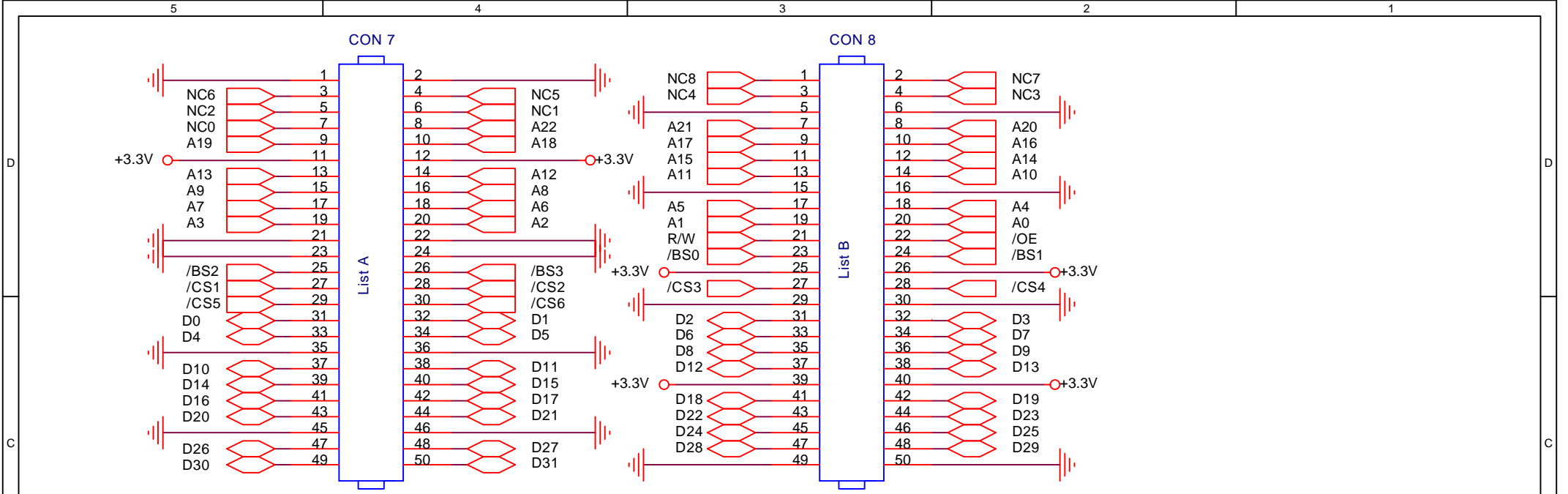
(c) 2002, senTec Elektronik GmbH

Title		
COBRA5272 Starterkit Board		
Size	Document Number	Rev
A	COBRA5272 Starterkit - Power Supply	1.0
Date:	Friday, May 24, 2002	Sheet 1 of 5



Note: Use SMT 100 for connecting COBRA5272 and Starterkit.
CON6A and CON6B are HARWIN 50.

(c) 2002, senTec Elektronik GmbH		
Title		
COBRA5272 Starterkit Board		
Size	Document Number	Rev
A	COBRA5272 Starterkit - Connectors to COBRA5272	1.0
Date:	Friday, May 24, 2002	Sheet 2 of 5



Interrupt

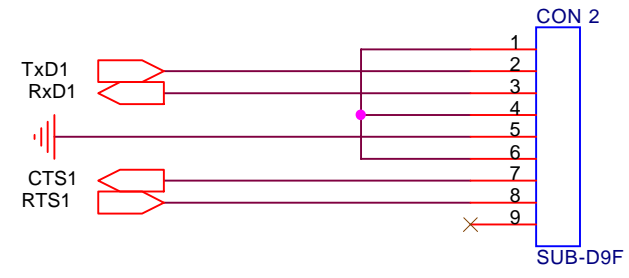
UART2 undriven

JTAG

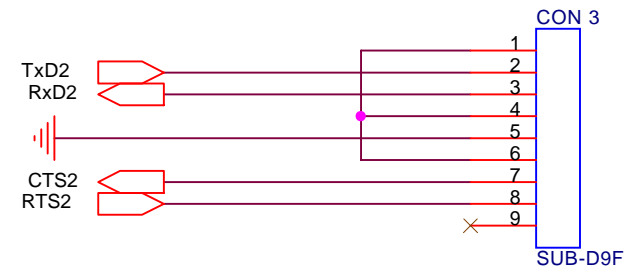
Note: Some signals may have different functions and are connected to different CONs. Please be careful, if you connect any CONs with own applications. Be sure, not to use same signal line in different ways!

(c) 2002, senTec Elektronik GmbH		
Title		
COBRA5272 Starterkit Board		
Size	Document Number	Rev
A	COBRA5272 Starterkit - Port Connectors	1.0
Date:	Friday, May 24, 2002	Sheet 3 of 5

UART1

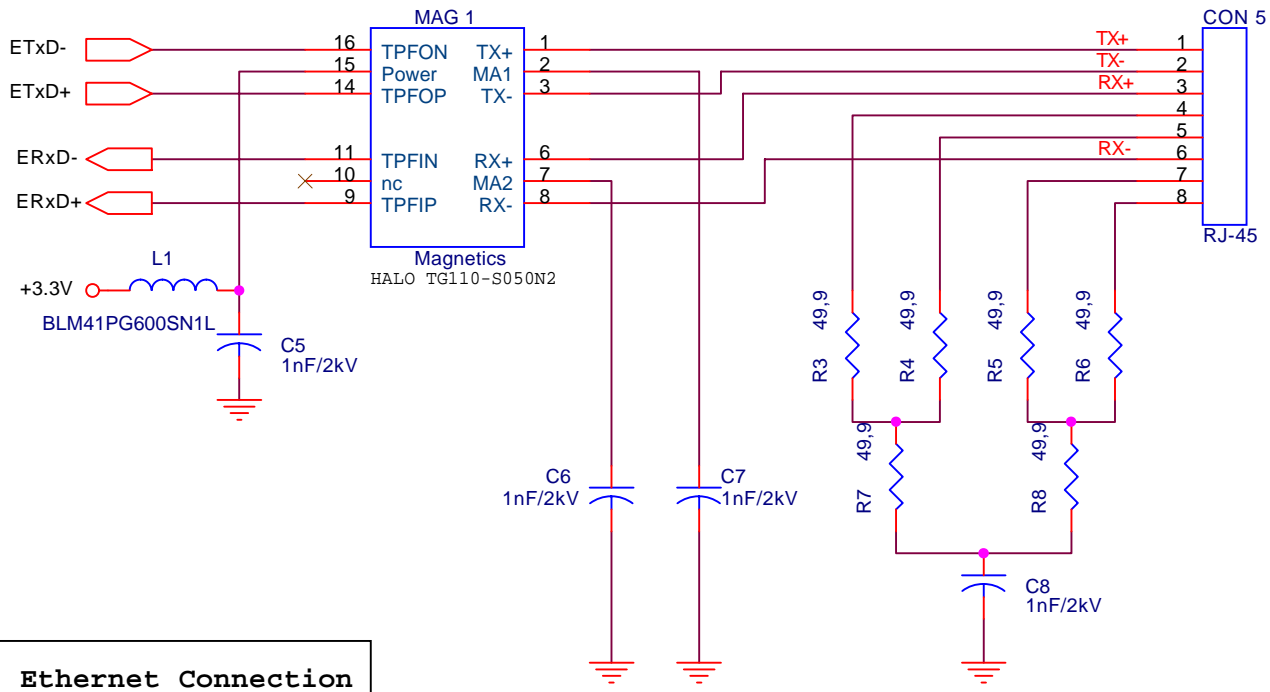
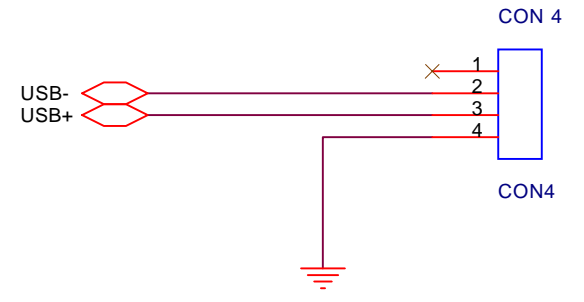


UART2



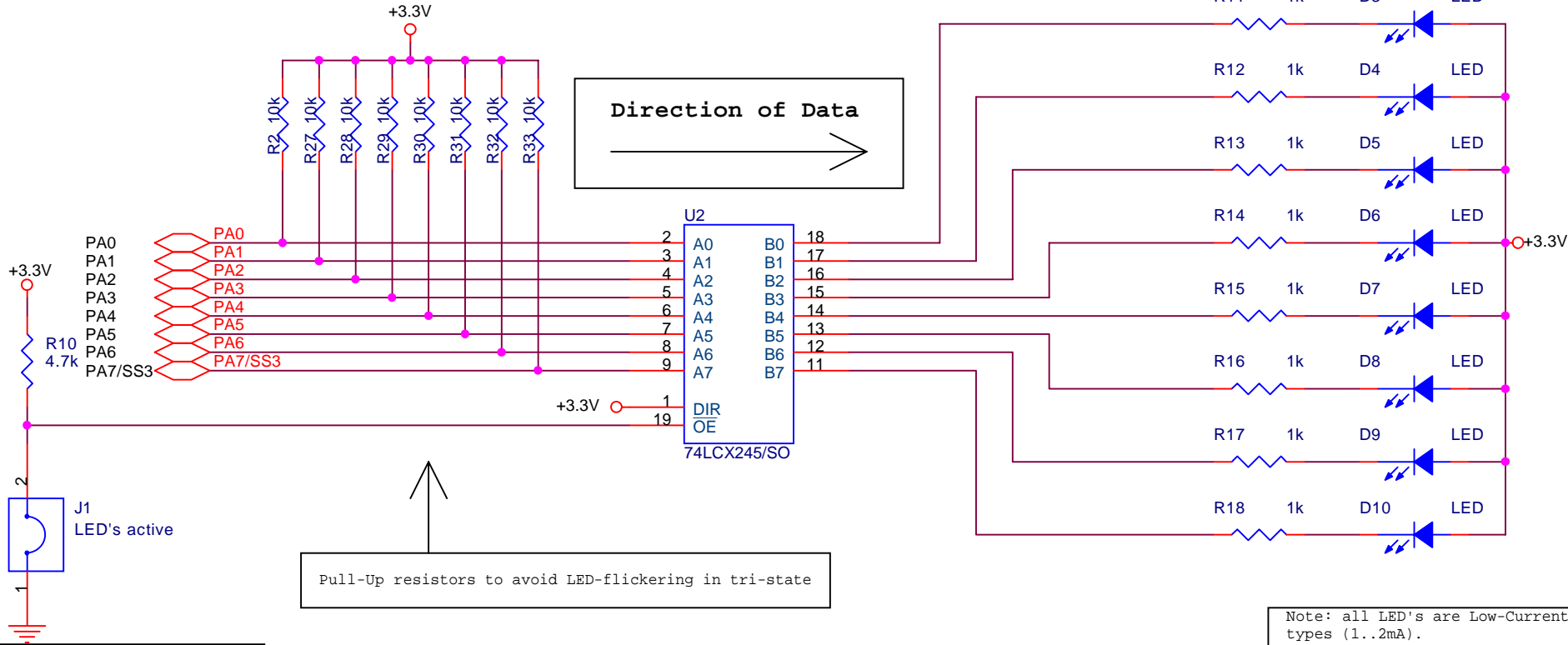
UART Connectors

USB Connection



Ethernet Connection

(c) 2002, senTec Elektronik GmbH		
Title		
COBRA5272 Starterkit Board		
Size	Document Number	Rev
A	COBRA5272 Starterkit - Interfaces	1.0
Date:	Friday, May 24, 2002	Sheet 4 of 5

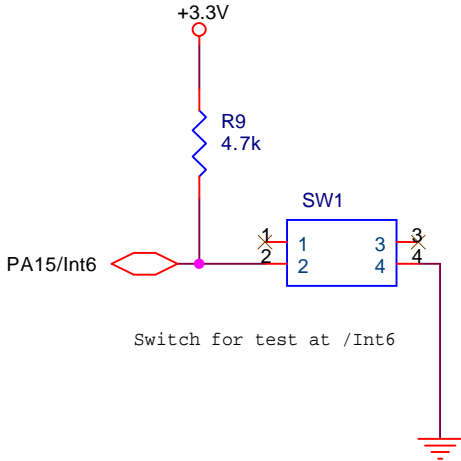


Direction of Data
→

Pull-Up resistors to avoid LED-flickering in tri-state

Note: all LED's are Low-Current types (1..2mA).

- to activate the LED's, fit the Jumper to enable the driver
- PortA[7:0] are Outputs



(c) 2002, senTec Elektronik GmbH		
Title		
COBRA5272 Starterkit Board		
Size A	Document Number COBRA5272 Starterkit - I/O for Applications	Rev 1.0
Date:	Friday, May 24, 2002	Sheet 5 of 5