



Board Type Serial-Ethernet Converter

CSE-M73A User Manual

Version 1.0

Sollae Systems Co., Ltd.

<https://www.ezTCP.com>



This symbol, found on your product or on its packaging, indicates that this product should not be treated as household waste when you wish to dispose of it. Instead, it should be handed over to an applicable collection point for the recycling of electrical and electronic equipment. By ensuring this product is disposed of correctly, you will help prevent potential negative consequences to the environment and human health, which could otherwise be caused by inappropriate disposal of this product. The recycling of materials will help to conserve natural resources. For more detailed information about the recycling of this product, please contact your local city office, household waste disposal service or the retail store where you purchased this product.

Contents

1	Overview	- 5 -
1.1	Overview	- 5 -
1.2	Application Examples	- 5 -
1.3	Specification	- 7 -
1.3.1	Hardware	- 7 -
1.3.2	Software	- 7 -
1.4	Dimension	- 8 -
1.5	Interfaces	- 9 -
1.5.1	RS232 Port (JP1 and JP2).....	- 9 -
1.5.2	RS422 and RS485 port (JP4 and JP5)	- 10 -
1.5.3	UART port (JP3).....	- 10 -
1.5.4	Ethernet Interface.....	- 11 -
1.5.5	ISP Jumper.....	- 11 -
1.5.6	Power.....	- 11 -
1.5.7	System LED.....	- 12 -
2	Installation and Test.....	- 13 -
2.1	Installation.....	- 13 -
2.1.1	Setting Network Aera.....	- 13 -
2.2	Simple Test.....	- 15 -
3	Configuration	- 18 -
3.1	Configuration with ezManager.....	- 18 -
3.1.1	Configuration via LAN.....	- 18 -
3.1.2	Configuration via Serial	- 19 -
3.2	AT command.....	- 20 -
4	Operation Modes	- 21 -
4.1	What is the Operation Mode?.....	- 21 -
4.2	How to enter each mode.....	- 21 -
4.3	Comparison of each mode.....	- 22 -
4.4	Normal Mode	- 22 -
4.5	Serial Configuration Mode	- 23 -
4.6	ISP Mode	- 23 -
4.6.1	Upgrading Firmware.....	- 23 -

4.6.2	<i>Revoking Security Options</i>	- 23 -
5	Communication Modes	- 24 -
5.1	TCP Server.....	- 24 -
5.1.1	<i>Key parameters</i>	- 24 -
5.1.2	<i>Examples</i>	- 25 -
5.2	TCP Client.....	- 28 -
5.2.1	<i>Key parameters</i>	- 28 -
5.2.2	<i>Examples</i>	- 29 -
5.3	AT Command.....	- 32 -
5.3.1	<i>Key parameters</i>	- 32 -
5.3.2	<i>Examples</i>	- 33 -
5.4	UDP.....	- 36 -
5.4.1	<i>Key parameters</i>	- 36 -
5.4.2	<i>Examples</i>	- 37 -
6	System Management	- 39 -
6.1	Upgrading Firmware.....	- 39 -
6.1.1	<i>Firmware</i>	- 39 -
6.1.2	<i>Processes</i>	- 39 -
6.2	Status Monitoring.....	- 41 -
6.2.1	<i>Using TELNET</i>	- 41 -
6.2.2	<i>Using ezManager</i>	- 43 -
6.2.3	<i>Debugging Message</i>	- 45 -
7	Additional Functions	- 47 -
7.1	Access Restriction.....	- 47 -
7.1.1	<i>Restriction of Access (ezTCP Firewall)</i>	- 47 -
7.1.2	<i>Setting Password</i>	- 47 -
7.2	Notify IP Change.....	- 48 -
7.3	Sending MAC Address.....	- 49 -
7.4	TELNET COM port Control Option (RFC 2217).....	- 49 -
7.5	Separator.....	- 50 -
7.6	SSL (Secure Socket Layer).....	- 51 -
7.6.1	<i>How to use as a TCP client</i>	- 51 -
7.6.2	<i>How to use as a TCP server</i>	- 51 -
7.7	SSH (Secure Shell).....	- 52 -
7.7.1	<i>How to use</i>	- 52 -

7.8 Multiple Connection	- 53 -
7.8.1 How to use	- 53 -
7.8.2 Diagram.....	- 53 -
7.9 RS422, 485 and 3.3V Communication	- 54 -
8 Self-Test in Trouble	- 55 -
8.1 Searching problem with ezManager.....	- 55 -
8.2 Connection Problem over TCP/IP.....	- 55 -
8.3 Data Communication Problem on the Serial.....	- 57 -
9 Related material.....	- 58 -
9.1 Technical Documents	- 58 -
9.2 Smart phone application.....	- 58 -
10 Technical Support and Warranty.....	- 59 -
10.1 Technical Support	- 59 -
10.2 Warranty.....	- 59 -
10.2.1 Refund.....	- 59 -
10.2.2 Free Repair Services	- 59 -
10.2.3 Charged Repair Services.....	- 59 -
11 Precaution and Exemption from Liability.....	- 60 -
11.1 Precaution.....	- 60 -
11.2 Exemption from Liability.....	- 61 -
11.2.1 English version.....	- 61 -
11.2.2 French version.....	- 62 -
12 History.....	- 64 -

1 Overview

1.1 Overview

Almost all communication devices including PC are using serial transmission. In this type, devices send and receive data in the order of each byte. The serial communication is quite simple to implement but has weaknesses like short distance and hard maintenance.

CSE-M73A lets the serial devices connect to the Internet. To communicate on the Internet, devices should use TCP/IP protocol, so CSE-M73A processes the converting serial data to TCP/IP.

CSE-M73A supports RS422, RS485 and 3.3V as well as RS232. The interfaces including the RJ45 connector let users apply this module to their system easily.

1.2 Application Examples

- 1:1 Connection with a PC

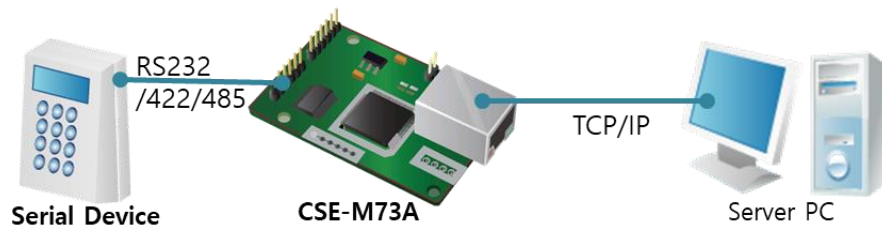


Figure 1-1 1:1 connection with a PC

- Applied to LANs

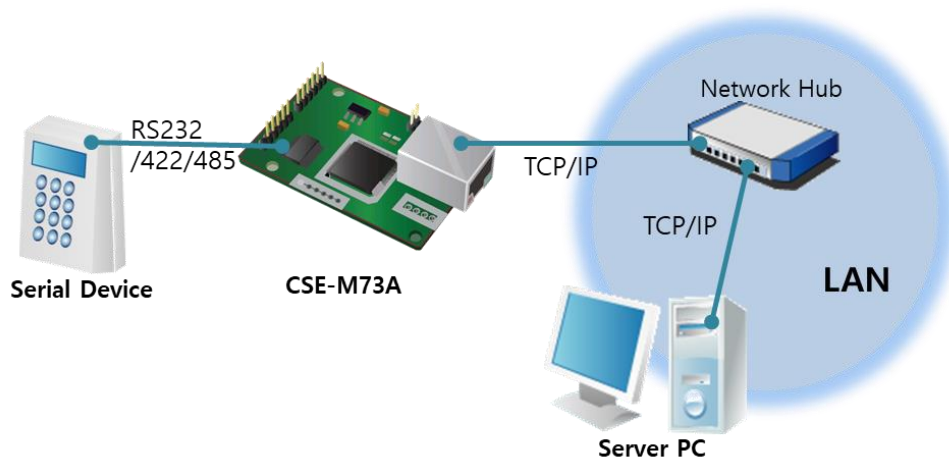


Figure 1-2 applied to LANs

- Applied to the Internet on Cable Networks

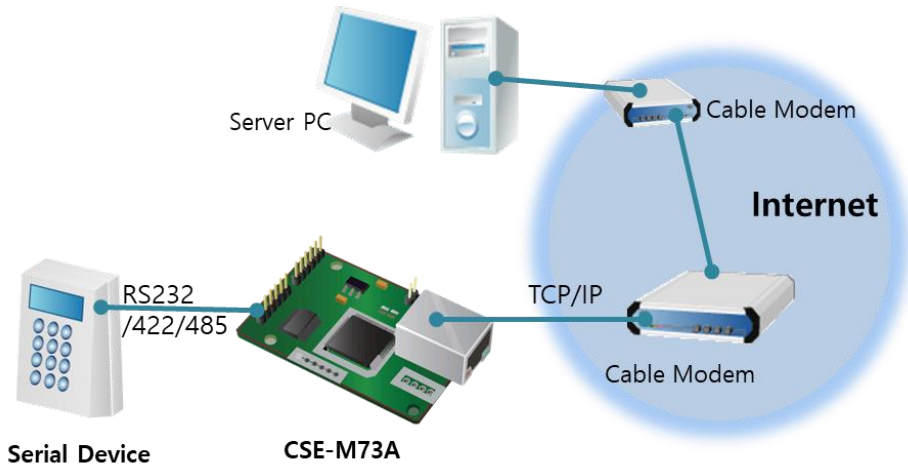


Figure 1-3 applied to the Internet on cable networks

- Applied to the Internet with an IP Share Router

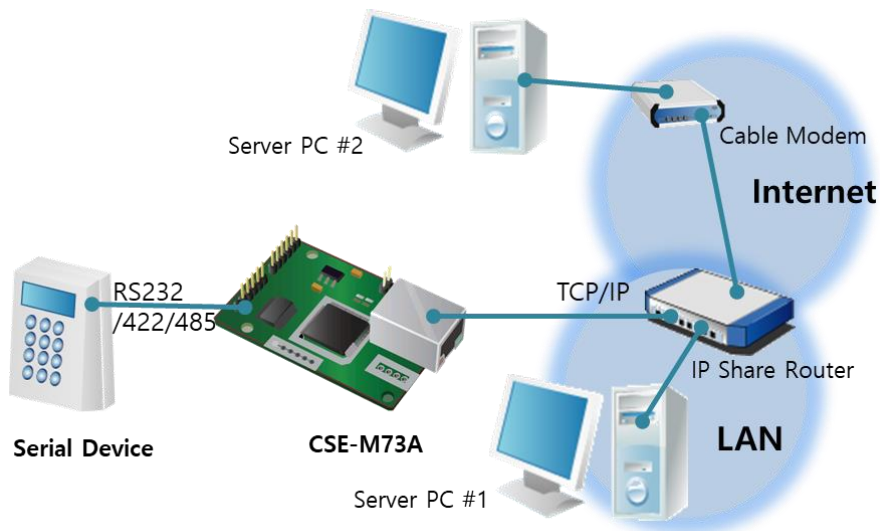


Figure 1-4 applied to the Internet with an IP share router

- An Example for Multiple Monitoring System

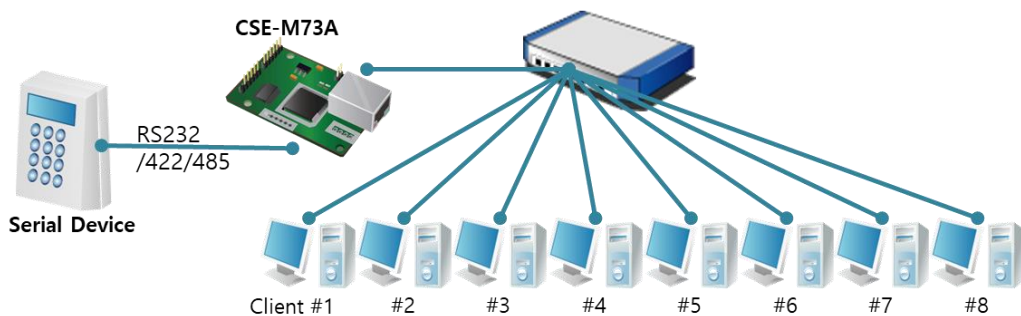


Figure 1-5 an example for multiple monitoring system

1.3 Specification

1.3.1 Hardware

Power	Input Voltage	DC 5V ($\pm 10\%$)
	Current	approximately 100mA (typical condition)
Dimension	64.3mm x 40mm x 17mm	
Weight	approximately 17g	
Serial Port	Serial	3.3V level with 5V tolerant input RS232, RS422 and RS485
	Network	Ethernet 10Base-T or 100Base-TX (Auto-Sensing) Auto MDI / MDIX cable auto-sense
Temperature	Operating: -40 ~ 85°C / Storage: -40 ~ 85°C	
RoHS	RoHS Compliant	

1.3.2 Software

Protocol	TCP, UDP, IP, ICMP, ARP, DHCP, PPPoE, Telnet, DNS Lookup, DDNS, TELNET COM port Control Option (RFC 2217), SSL, SSH	
Diagnose	Online Debugging Function	
Operation mode	Normal	For Normal Data Communication
	ISP	For Upgrading F/W
	Serial Configuration	For Configuration via Serial
Communication mode	TCP Server	TCP Passive Connection
	TCP Client	TCP Active Connection
	AT Command	TCP Passive / Active Connection
	UDP	UDP – No Connection
Major Utilities	ezManager	Configuration Utility for MS Windows (Supports Downloading F/W)
	ezVSP	Serial to TCP/IP Virtual driver for MS Windows

1.4 Dimension

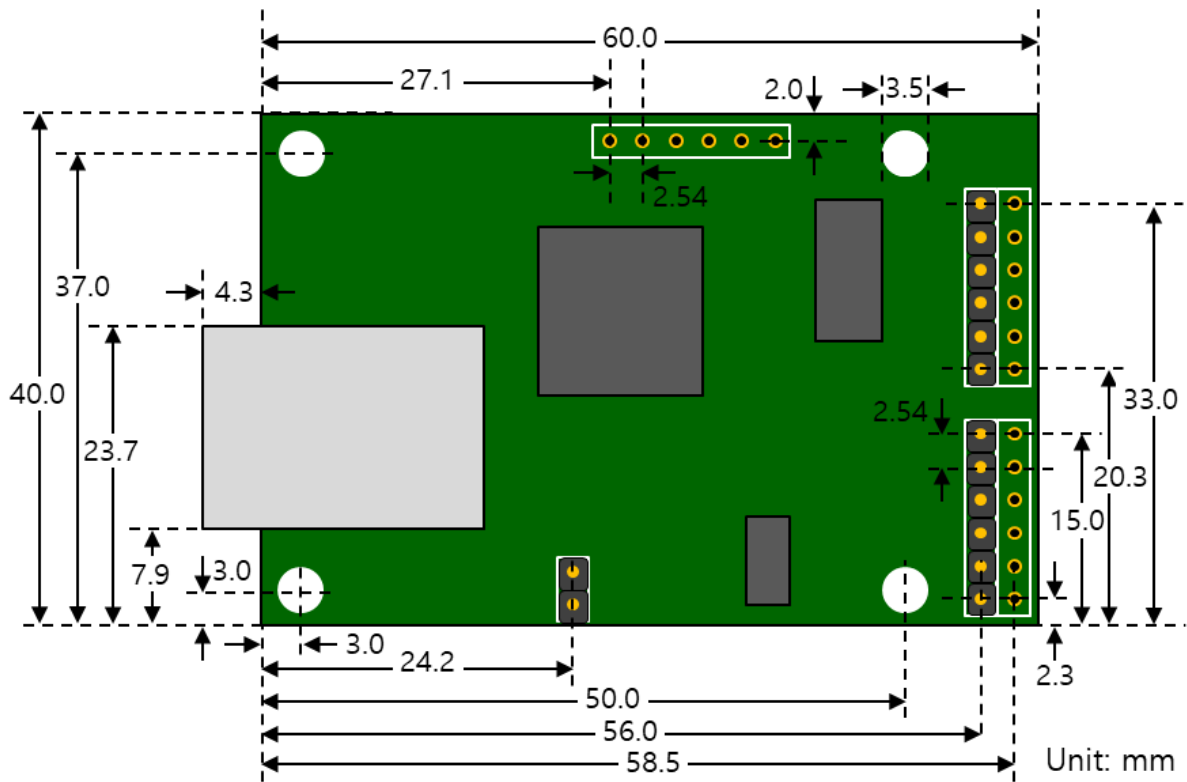


그림 1-1 Dimension

- ☞ *According to conditions of soldering components, the dimensions might be differed with the above figure. Thus, we recommend giving some extra spaces about 1 ~ 2 mm.*

1.5 Interfaces

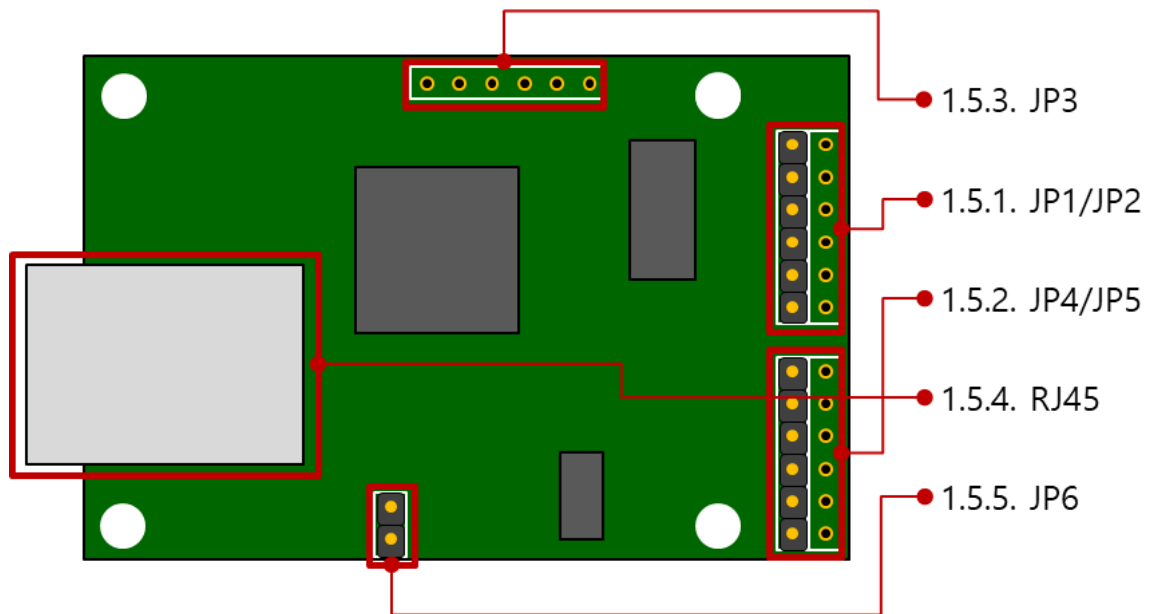


Figure 1-6 Interface

1.5.1 RS232 Port (JP1 and JP2)

CSE-M73A has an RS232 port for serial device (300bps ~ 230,400bps). This port is interfaced with JP1 and JP2. It supports RTS/CTS hardware flow control and pins which have the same number of JP1 and JP2 are connected each other.

Number	Name	Description	Level	I/O	Etc.
1	VCC	DC 5V Power	-	-	required
2	RXD	Receive Data	RS232	IN	required
3	TXD	Transmit Data	RS232	OUT	required
4	GND	Ground	-	-	required
5	RTS	Request To Send	RS232	OUT	optional
6	CTS	Clear To Send	RS232	IN	optional

Table 1-1 pin assignment of the RS232 port

1.5.2 RS422 and RS485 port (JP4 and JP5)

CSE-M73A has a port for RS422 or RS485. This port is interfaced with JP4 and JP5. The pins which have the same number of JP4 and JP5 are connected each other. When you connect your device, remember that a pin should be connected with the one which has the same polarity. Of course, an output pin (Transmit-TX or TXD) has to be connected to an input pin (Receive-RX or RXD).

Number	Name	Description	Level	I/O	Etc.
1	VCC	DC 5V Power	-	-	required
2	TRX+	(RS422) Transmit Data +	RS422	IN	required
		(RS485) Data +	RS485		
3	TRX-	(RS422) Transmit Data -	RS422	OUT	required
		(RS485) Data -	RS485		
4	GND	Ground	-	-	required
5	RX+	(RS422) Receive Data +	RS422	OUT	optional
6	RX-	(RS422) Receive Data -	RS422	IN	optional

Table 1-2 pin assignment of the RS422/485 port

☞ ***In some environments, to prevent reflection wave, two terminal resistors may be needed at the end of the RS422 and 485 networks.***

1.5.3 UART port (JP3)

Number	Name	Description	Level	I/O	Etc.
1	VCC	DC 5V Power	-	-	required
2	RXD	Receive Data	3.3V	IN	required
3	TXD	Transmit Data	3.3V	OUT	required
4	GND	Ground	-	-	required
5	RTS	Request To Send	3.3V	OUT	optional
6	CTS	Clear To Send	3.3V	IN	optional

Table 1-3 pin assignment of the UART port

The DC electrical characteristics of the JP3 are followed

Symbol	Description	Min	Max	Unit
V _{IL}	voltage input of LOW	- 0.3	0.8	Volt
V _{IH}	voltage input of HIGH	2.0	5.5	
V _{OL}	voltage output of LOW	-	0.4	
V _{OH}	voltage output of HIGH	VCC – 0.4	-	

Table 1-4 electrical characteristics of the JP3

1.5.4 Ethernet Interface

Since part of CSE-M73A network is composed of Ethernet, UTP cable may be connected. It will automatically sense 10Mbps or 100Mbps Ethernet and connect itself. It also provides auto MDI/MDIX function that can automatically sense 1:1 cable or cross over cable.

Each Ethernet device has its own unique hardware address. The hardware address of CSE-M73A is set in the factory before being shipped to the market. (The hardware address is also known as the MAC address)

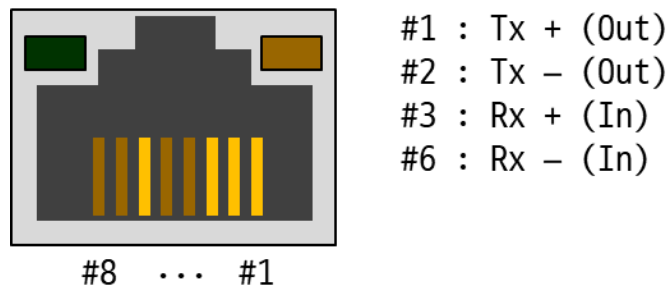


Figure 1-7 the Ethernet interface

1.5.5 ISP Jumper

You can change the operation mode of CSE-M73A to ISP or Serial Configuration mode by using this jumper.

1.5.6 Power

Input voltage is DC 5V for CSE-M73A. To supply power, all VCC and GND pins on JP1 ~ JP5 are available.

1.5.7 System LED

- RJ45

There are 2 LEDs in the RJ-45 connector. Each lamp shows the following status:

Mode	Color	Status	Description
Normal	Yellow	Blinks in every second	Obtaining an IP address
		Blinks 4 times at once	Without obtaining an IP address under DHCP or PPPoE network
		ON	On TCP connection
	Green	ON	Connecting with Ethernet
		OFF	Before connecting with Ethernet
		Blinking	Sending or Receiving data from Ethernet
ISP	Both	OFF	In the ISP mode
Serial Configuration	Both	Blinks simultaneously	In the Serial Configuration mode

Table 1-5 Status of the system LED

- Power LED

Mode	Color	Status	Description
Common	Red	ON	Supplying the Power

Table 1-6 Power LED

2 Installation and Test

2.1 Installation

Before testing the CSE-M73A, users should connect both serial and Ethernet port to a PC. It is fine that the Ethernet connection includes network hubs.

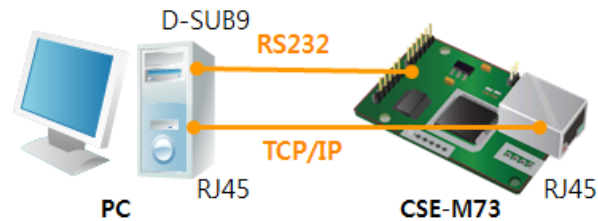


Figure 2-1 connection between M73A and a PC

Procedures for the test are followed.

2.1.1 Setting Network Aera

This step is for setting both CSE-M73A and users' PC to be located the same network. If only they are, the TCP connection between them can be established.

- Setting of the PC

Set the IP address to the Ethernet adapter of the PC connected to the product as follows.

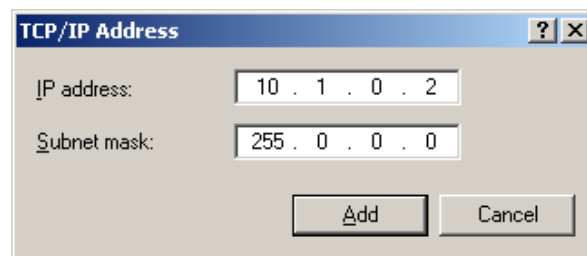


Figure 2-2 Setting IP address of the PC

- Setting of CSE-M73A

CSE-M73A uses ezManager as it's a configuration program. ezManager is for MS Windows, and it doesn't need installation.

All environmental variables are set to the factory default values, so they must be changed to suit the purpose of use in order to apply them to the actual system. The following table shows the default values of the main environmental variables. For test operation, please keep the CSE-M73A's IP address and all environment values as the default settings below.

Name		Default Values
Network	Local IP Address	10.1.0.1
	Subnet Mask	255.0.0.0
Option	TELNET	Checked
	IP Address Search	Checked
Serial Port (COM1)	Serial Type	RS232
	Baud Rate	19,200bps
	Parity	NONE
	Data Bits	8
	Stop Bit	1
	Flow Control	NONE
	Communication mode	TCP Server
Local Port	1470	

Table 2-1 Default values of Major parameters

 ***Users can download the latest version of ezManager on our website.***

2.2 Simple Test

If you press the [Simple Test] button, test program will be shown on your screen.

- Connecting to the CSE-M73A via LAN

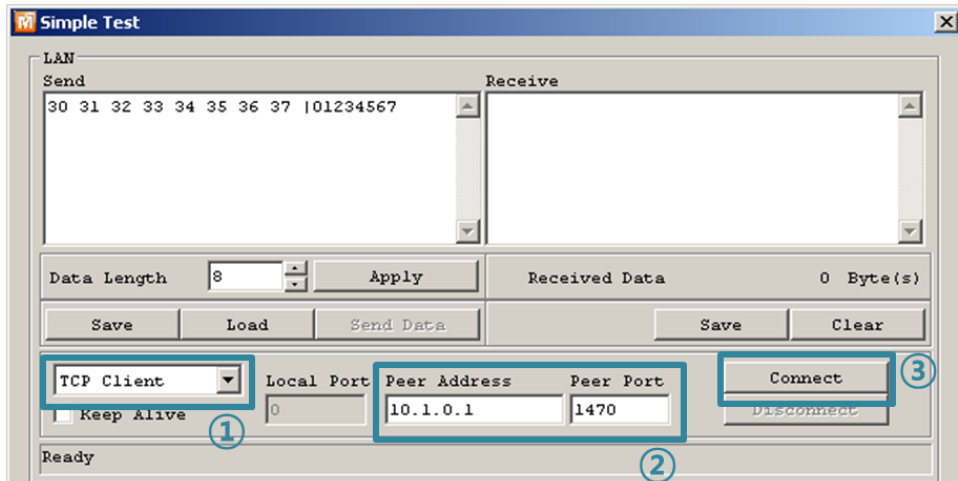


Figure 2-3 settings for TCP connection

- ① Select [TCP Client]
- ② Input correct IP address and port number of CSE-M73A
- ③ Click the [Connect] button. (In case of TCP Server, it will be [Listen] button)

- Opening RS232 Port

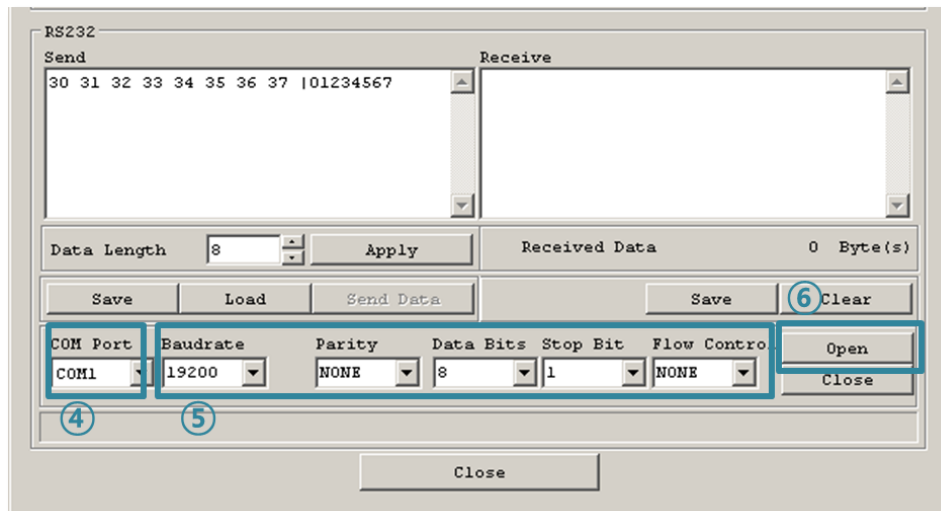


Figure 2-4 opening COM Port

- ④ Select COM port which the CSE-M73A is connected to
- ⑤ Make sure that all the parameters are the same with M73A
- ⑥ Press the [Open] button

- Confirm the TCP Connection and COM port status

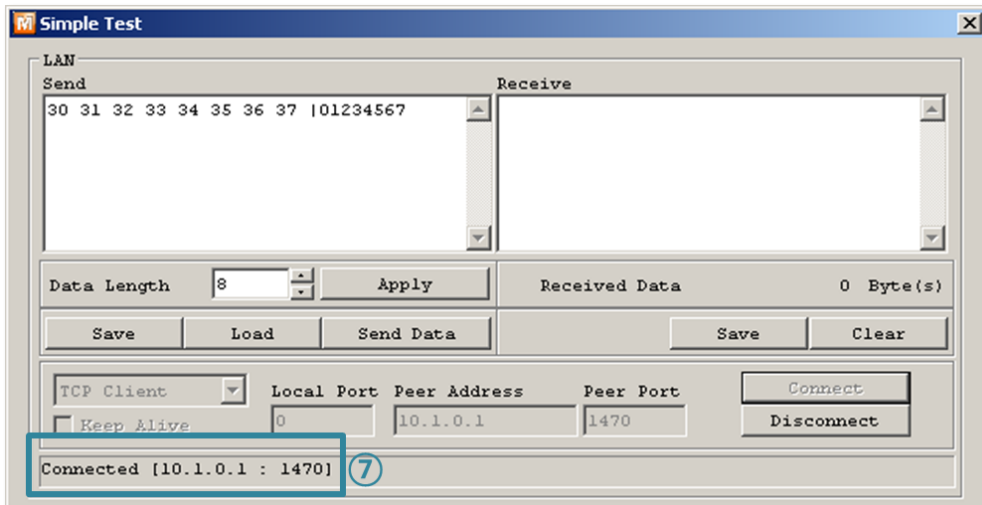


Figure 2-5 TCP Connected message

- ⑦ Check the message if the TCP connection is established

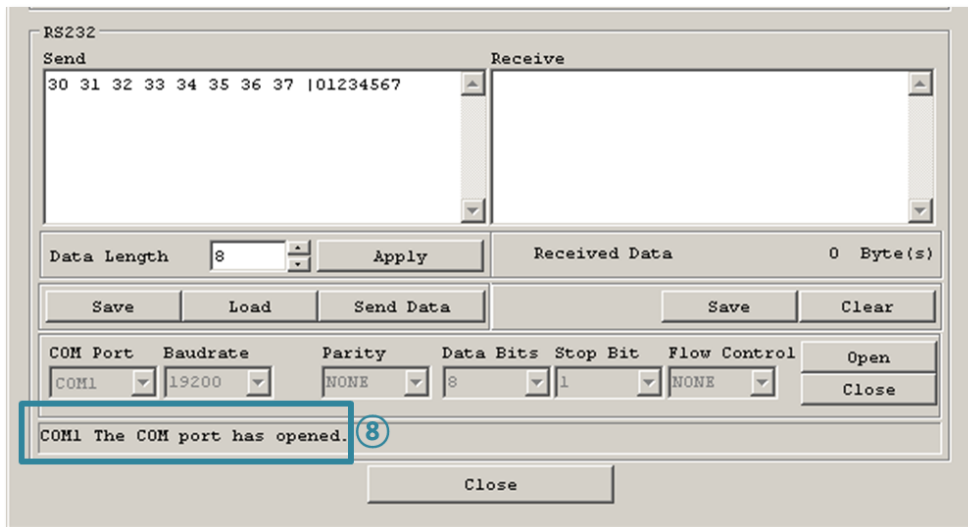


Figure 2-6 COM Port open message

- ⑧ Check the message if the COM port has been opened

- Data transmission test

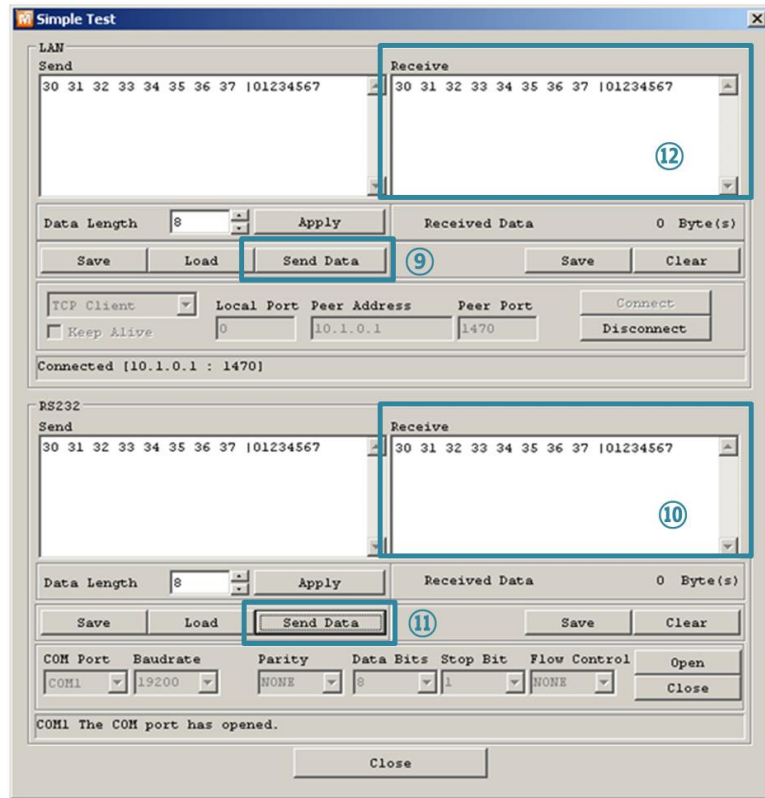


Figure 2-7 successful data transmission

- ⑨ Click the [Send data] on the LAN part
- ⑩ Check the data have been shown from the step ⑨

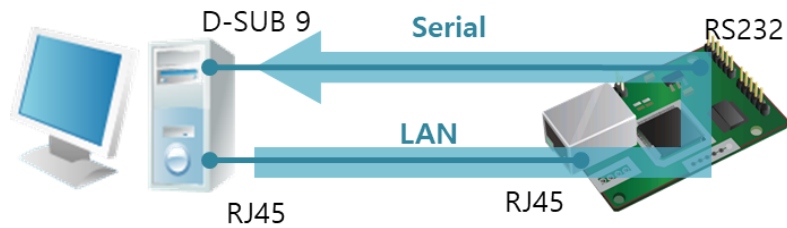


Figure 2-8 LAN → RS232

- ⑪ Press the [Send data] on the RS232 part
- ⑫ Check the data have been received from the step ⑪

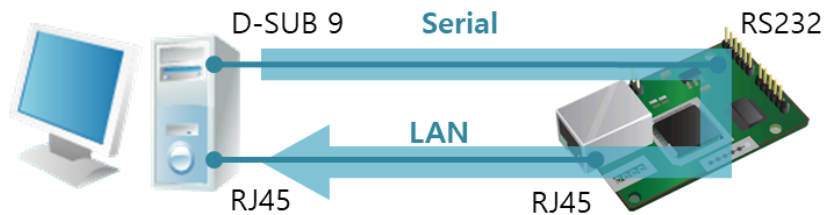


Figure 2-9 RS232 → LAN

3 Configuration

3.1 Configuration with ezManager

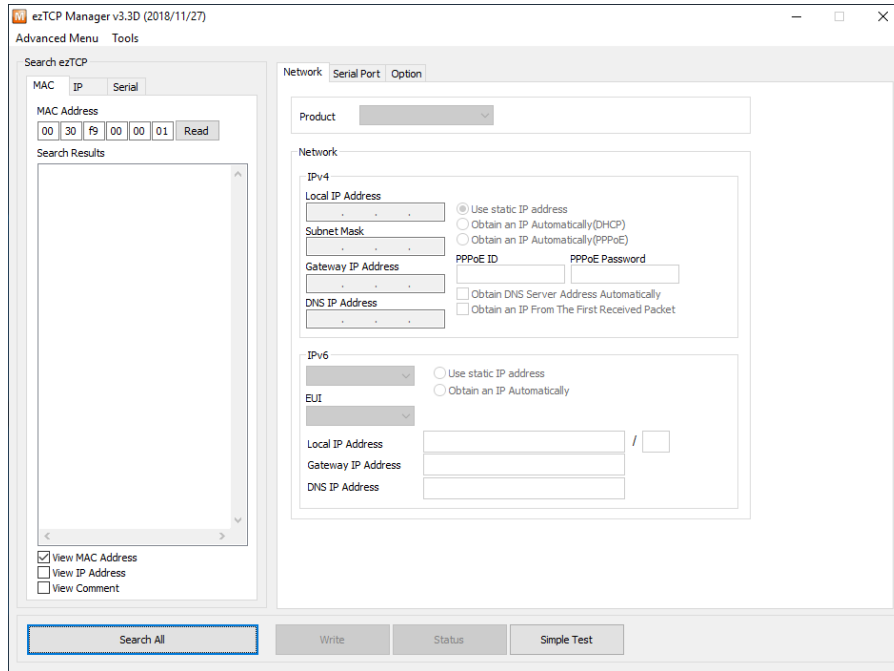


Figure 3-1 initial appearance of ezManager

3.1.1 Configuration via LAN

- Checklists

Make sure the connection between your PC and CSE-M73A. If they are the same network, [MAC Address search] button can be used. If they aren't, only [IP Address search] is allowed to use.

- Procedures

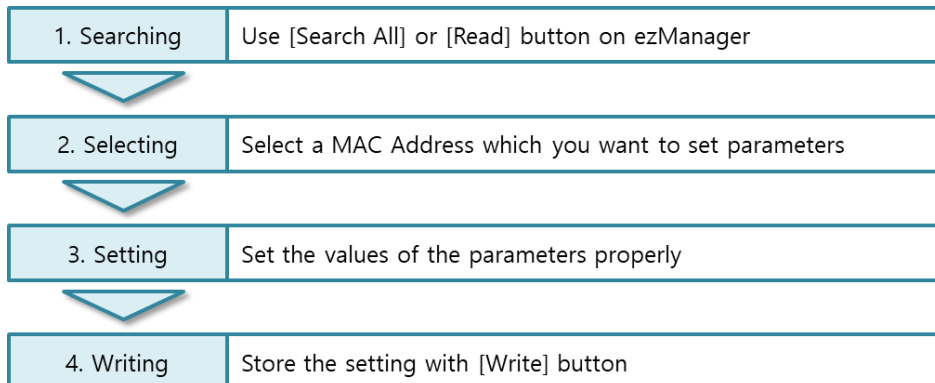


Figure 3-2 procedures for configuration via LAN

3.1.2 Configuration via Serial

- Checklists

Make sure the connection between your PC and CSE-M73A using RS232 cross cable. To use this, CSE-M73A has to be operating in the [Serial Configuration] mode. By connecting the ISP jumper less than 1 second, you can enter the mode. After then, read the setting via [Serial] tab on ezManager.

- Procedures

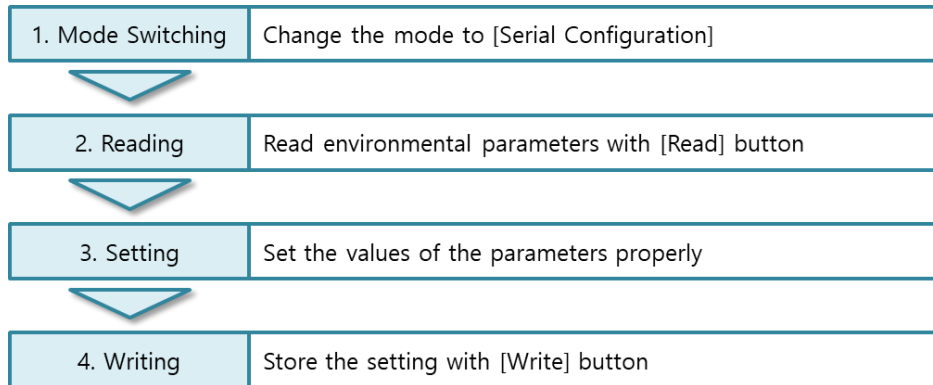


Figure 3-3 procedures for configuration via Serial

- Step 2, Reading

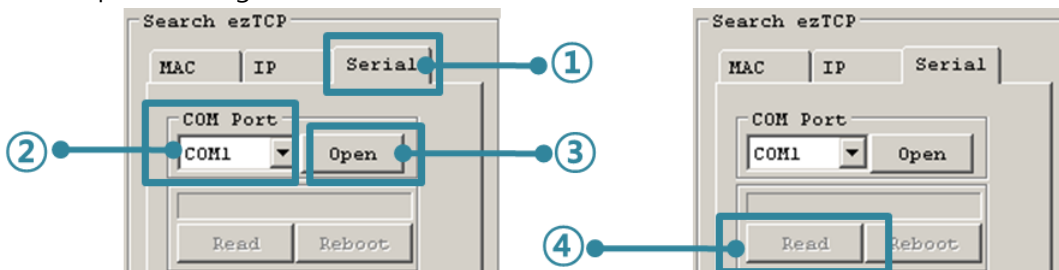


Figure 3-4 reading procedure via serial

- ① Choose the [Serial] tab
- ② Select the COM port which the M73A is connected with
- ③ Open the COM port with the [Open] button
- ④ Load the setting with [Read] button

☞ ***If you want to know more specific manners of setting, please refer to “ezManager Users’ Manual” document.***

3.2 AT command

In the AT command mode, you can change some parameters through the serial port.

- Checklists

Make sure the connection between your PC and CSE-M73A using RS232 cross cable. To use this, CSE-M73A has to be set to [AT command] mode as its communication mode. This can be configured by ezManager.

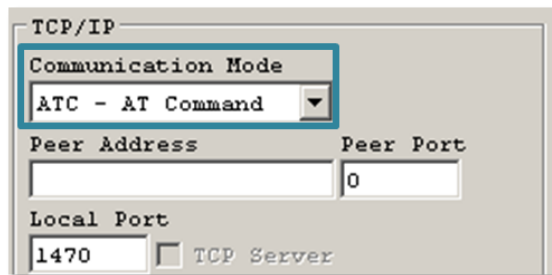


Figure 3-5 setting the communication mode to the AT command

- Procedures

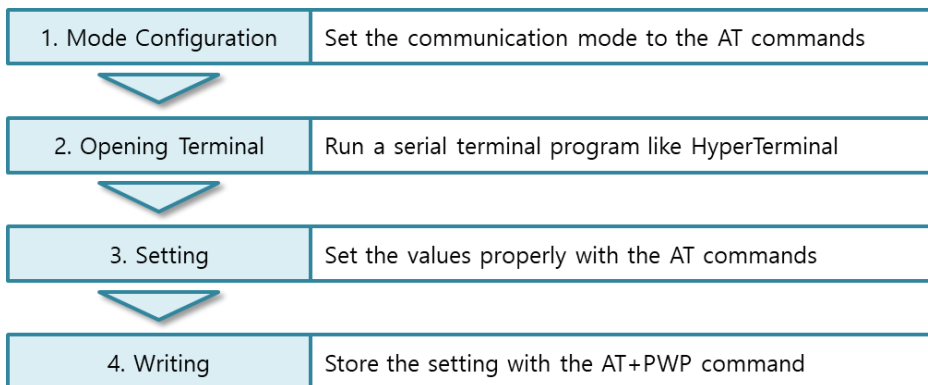


Figure 3-6 procedures for configuration with AT command

Division	Available parameters
IP Address related items	Local IP Address, DHCP, PPPoE, Subnet Mask, Gateway IP Address, DNS IP Address, ...
TCP connection related items	Local Port, Peer Address (IP Address or Host name), Peer Port, ...
Option	ESC code sending option, timeout, ...

Table 3-1 parameters which are available to change with AT command

☞ ***Including above items, rest of parameters can be set by ezManager***

4 Operation Modes

4.1 What is the Operation Mode?

Each of three operation mode of CSE-M73A is defined for specific purpose, and those are followed.

- Normal mode
This mode is for normal data communication and has 4 different connection modes. Configuring parameters is also available in this mode.
- Serial configuration mode
This mode is for configuring environmental parameters through the RS232 port.
- ISP mode
This mode is for upgrading firmware. In addition, you can set environmental parameters even though the security options like password are activated by entering this mode.

4.2 How to enter each mode

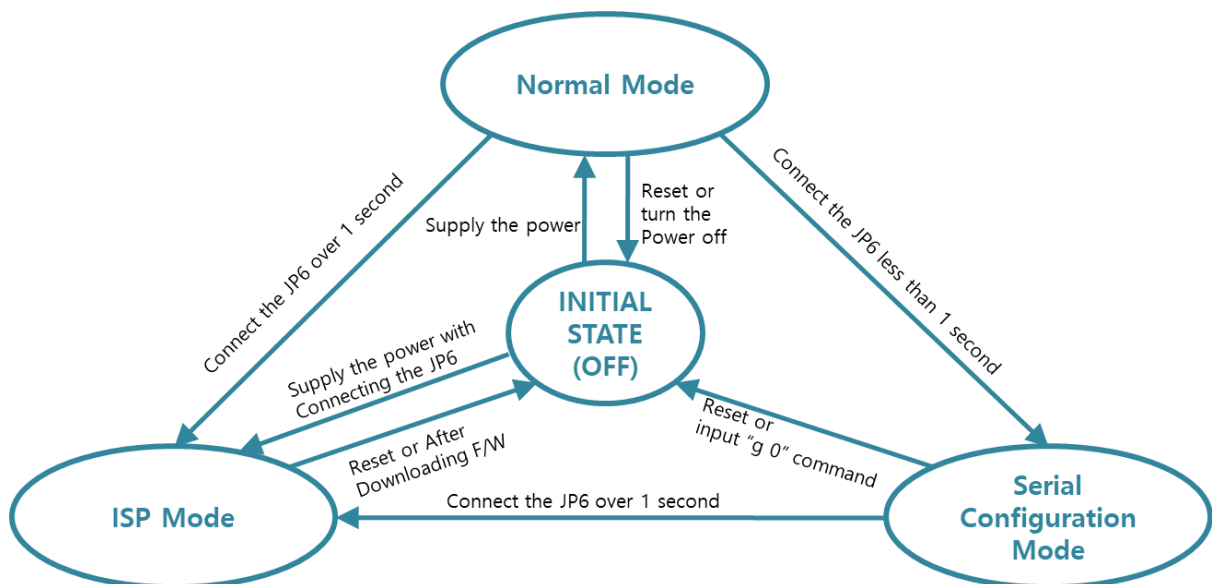


Figure 4-1 How to enter each mode

4.3 Comparison of each mode

Table 4-1 shows summaries of each mode

Name	Entering	Serial port
Normal	Supply the power.	Configured value
Serial Configuration	Connect the JP6 shortly between 10ms and 1s.	115200/N/8/1
ISP	Supply the power with connecting the JP6 or connect the JP6 over 1 sec, in other modes.	115200/N/8/1

Table 4-1 comparison of each mode

4.4 Normal Mode

In normal mode, there are four connection types to communication with a remote host.

- TCP Server
- TCP Client
- AT Command
- UDP

Name	Protocol	Connection	Modifying software of serial devices	Serial configuration	Topology
TCP Server	TCP	Passive	-	Unavailable	1:1
TCP Client		Active	-	Unavailable	1:1
AT Command		Either	Required	Available	1:1
UDP	UDP	-	-	Unavailable	N:M

Table 4-2 comparison of four communication modes

TCP is a type of protocol, which has a process of connection. The connection has to be one to one. The part who tries to make the connection is called TCP Client, and the other part is TCP Server. On the other hand, UDP has no connection process. Because of this, each of them can be send and receive data from multiple hosts.

4.5 Serial Configuration Mode

This is a mode for setting environmental parameters through RS232 port. If you can't use the Ethernet, this mode is only way to configure the values. Once entering this mode, use the [Read] button on the [Serial] tab of ezManager.

4.6 ISP Mode

You can enter this mode by connecting the ISP jumper over 1 second. There are two special purposes in this mode.

4.6.1 Upgrading Firmware

ISP mode is for upgrading firmware which is offered by us. The upgrade is implemented on Ethernet.

☞ ***The details are followed in the "6.1 Upgrading Firmware".***

4.6.2 Revoking Security Options

CSE-M73A offers restriction methods for security like filtering password or MAC and IP address. In the ISP mode, you can revoke all of these. When you forgot the password, enter the ISP mode to solve the problem.

5 Communication Modes

5.1 TCP Server

In this mode, CSE-M73A functions as a TCP server. CSE-M73A listens to a TCP connection from remote host. Once a host tries to connect to CSE-M73A and the module responds that request. After the connection is established, CSE-M73A converts the raw data from the serial port to TCP/IP data and sends them to the network and vice versa.

5.1.1 Key parameters

- Local Port

This is a server's port number which is used in the TCP connection.

- Event Byte

With setting event bytes, users can handle the serial data before a TCP connection is established.

Value	Description
0	CSE-M73A doesn't send the data
Otherwise (512 or Under)	CSE-M73A sends the data right after a connection is established. 512 or under bytes are strongly recommended.

Figure 5-1 Event Byte

- Timeout

If there is no transmission of data for amount of time which is set to this parameter, CSE-M73A tries to terminate established TCP connection.

- Notify IP Change

This function is for notifying information about changed IP address to a server. Not only the TCP/UDP protocol but Dynamic Domain Name Service (DDNS) can be used.

- Restriction of Access

Users can block TCP connections from unauthorized hosts by using this option. Both IP and MAC address are available.

5.1.2 Examples

- A situation that [Event Byte] is set to 0.

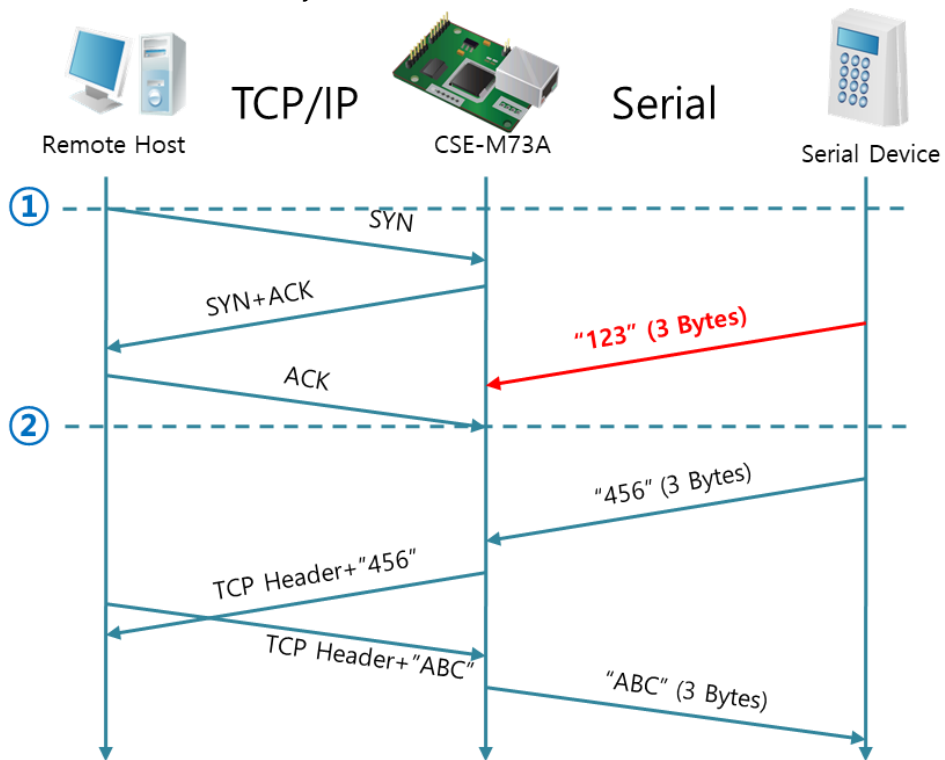


Figure 5-2 time chart for a situation that [Event Byte] is set to zero

Points	States
~	CSE-M73A is listening to connection requests
①	Remote host has sent a connection request (SYN) segment
~	Processes of the connection
②	The connection has been established
~	Data communication on both sides

Figure 5-3 states of each points

Look at the blue arrow. The data "123" from the serial port had sent before the connection is established. In this case, the data wasn't sent because of the [Event Byte] is set to 0

- A situation that [Event Byte] is set to 1.

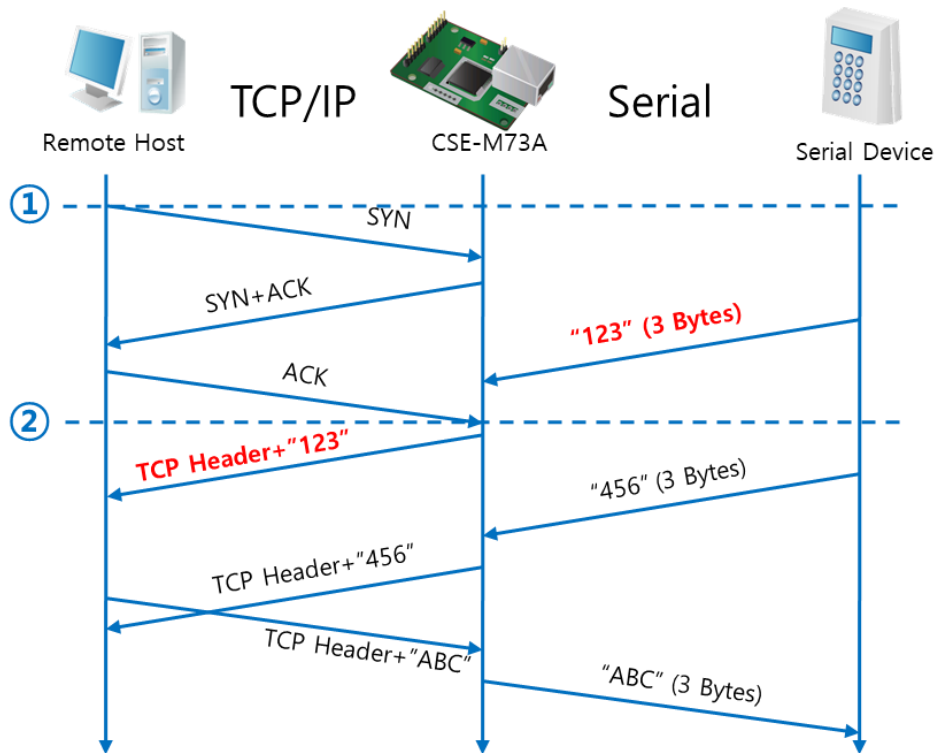


Figure 5-4 time chart for a situation that [Event Byte] is set to 1

Points	States
~	CSE-M73A is listening to connection requests
①	Remote host has sent a connection request (SYN) segment
~	Processes of the connection
②	The connection has been established
~	The data "123" has been sent right after the end of connection processes

Figure 5-5 states of each points

As you can see, the data "123" has been sent right after the connection is established because the value of [Event Byte] had been set to 1. If the value is not 0, the result is the same as above example.

- A situation that [Timeout] is set to 5.

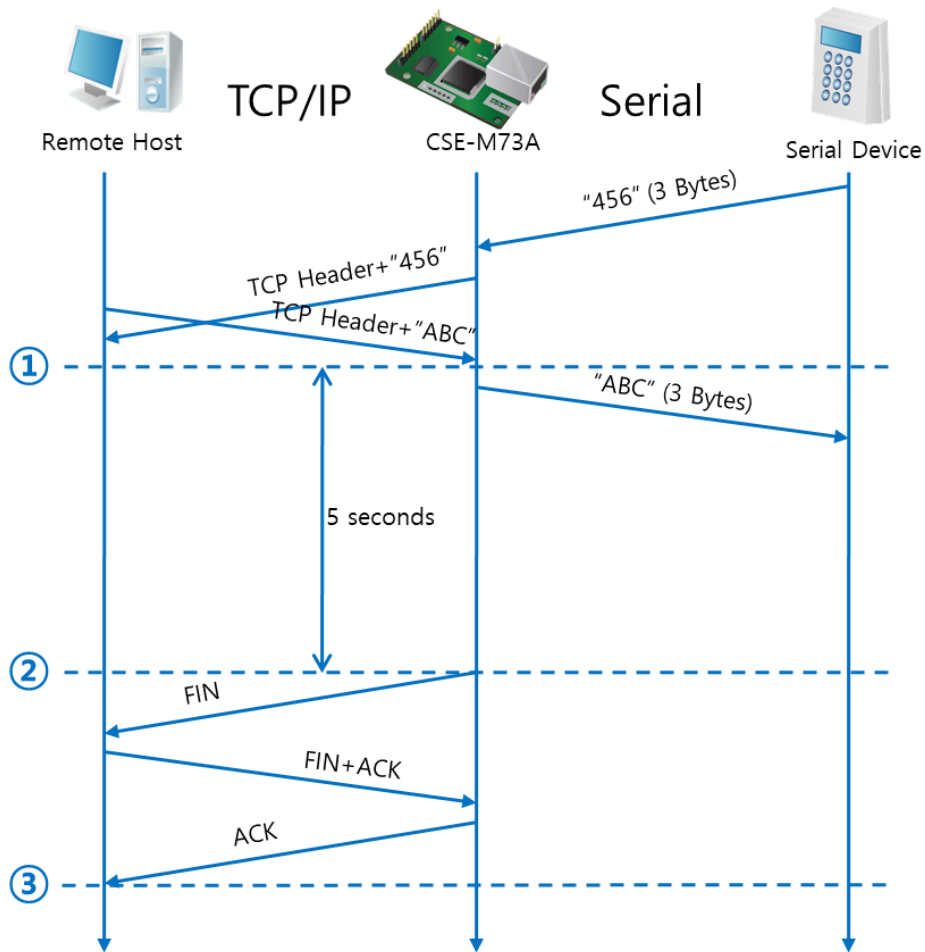


Figure 5-6 time chart for a situation that [Timeout] is set to 5

Points	States
~	Data communication on both sides
①	The last segment has been arrived at the CSE-M73A
~	5 seconds are passed with no data communication
②	CSE-M73A has sent disconnection request (FIN) to a remote host
~	Processes of the disconnection
③	The connection has been terminated
~	M73A is listening to connection requests

Figure 5-7 states of each points

5.2 TCP Client

In this mode, CSE-M73A functions as a TCP client. CSE-M73A sends request segments to a remote host with information of [Peer Address] and [Peer Port]. Once a host is listening and works correctly, the connection will be established. After then, CSE-M73A converts the raw data from the serial port to TCP/IP data and sends them to the network and vice versa.

5.2.1 Key parameters

- Peer Address

This item should be an address of a remote host who is listening TCP connections.

- Peer Port

[Peer Port] should be the port number which is designated by the remote host.

- Event Byte

CSE-M73A decides the time to send the connection request frame with this parameter.

Value	Description
0	CSE-M73A sends TCP connection request segment Right after it boots up
Otherwise (512 or under)	CSE-M73A sends the segment right after it received amount of data which is set to the [Event Byte] from the serial port 512 or under bytes are strongly recommended.

Figure 5-8 the operation of Event Byte 1

In addition, users can handle the serial data before a TCP connection is established with this parameter.

Value	Description
0	CSE-M73A doesn't send the data
Otherwise (512 or under)	CSE-M73A sends the data right after a connection is established. 512 or under bytes are strongly recommended.

Figure 5-9 the operation of Event Byte 2

- Timeout

If there is no transmission of data for amount of time which is set to this parameter, CSE-M73A tries to terminate established TCP connection.

- TCP Server

This check option enables the TCP server / client mode. In this mode, CSE-M73A can be operated as a TCP server or client without changing its setting.

- DNS IP Address
[DNS IP Address] needs when you use host name instead of the IP address.

5.2.2 Examples

- A situation that [Event Byte] is set to 0.

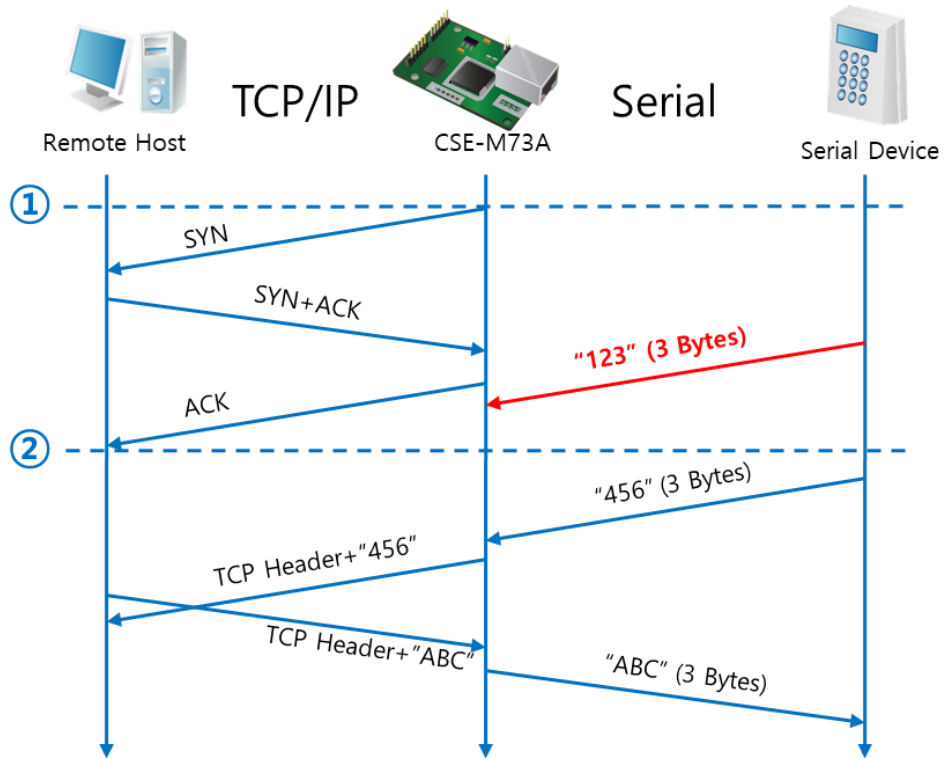


Figure 5-10 time chart for a situation that [Event Byte] is set to 0

Points	States
~	Before the power is supplied
①	Sends TCP connection request segment right after it boots up
~	Processes of the disconnection
②	The connection has been established
~	Data communication on both sides

Figure 5-11 states of each points

Look at the blue arrow. The data "123" from the serial port had sent before the connection is established. In this case, the data wasn't sent because of the [Event Byte] is set to 0

- A situation that [Event Byte] is set to 5.

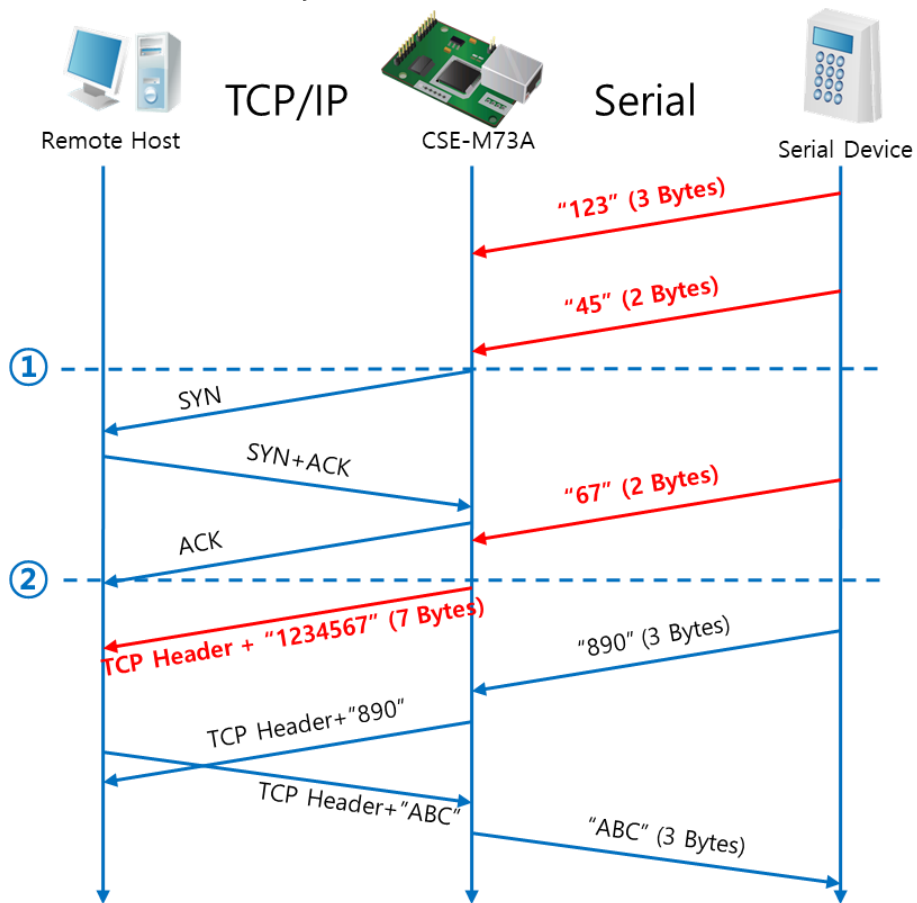


Figure 5-12 time chart for a situation that [Event Byte] is set to 5

Points	States
~	CSE-M73A has receives data from its serial port until the amount of data is 5 bytes
①	Sends connection request segment right after receiving 5 bytes.
~	Processes of the TCP connection
②	The connection has been established
~	The "1234567" is transmitted to the remote host

Figure 5-13 states of each points

As you can see in the figure 5-5, CSE-M73A sends request segment right after the serial data had been 5 bytes. Even though those are come before the connection is established, the data "123", "45" and "67" are transmitted to the remote host because of the [Event Byte] is set to 5.

- An activated [TCP Server] option

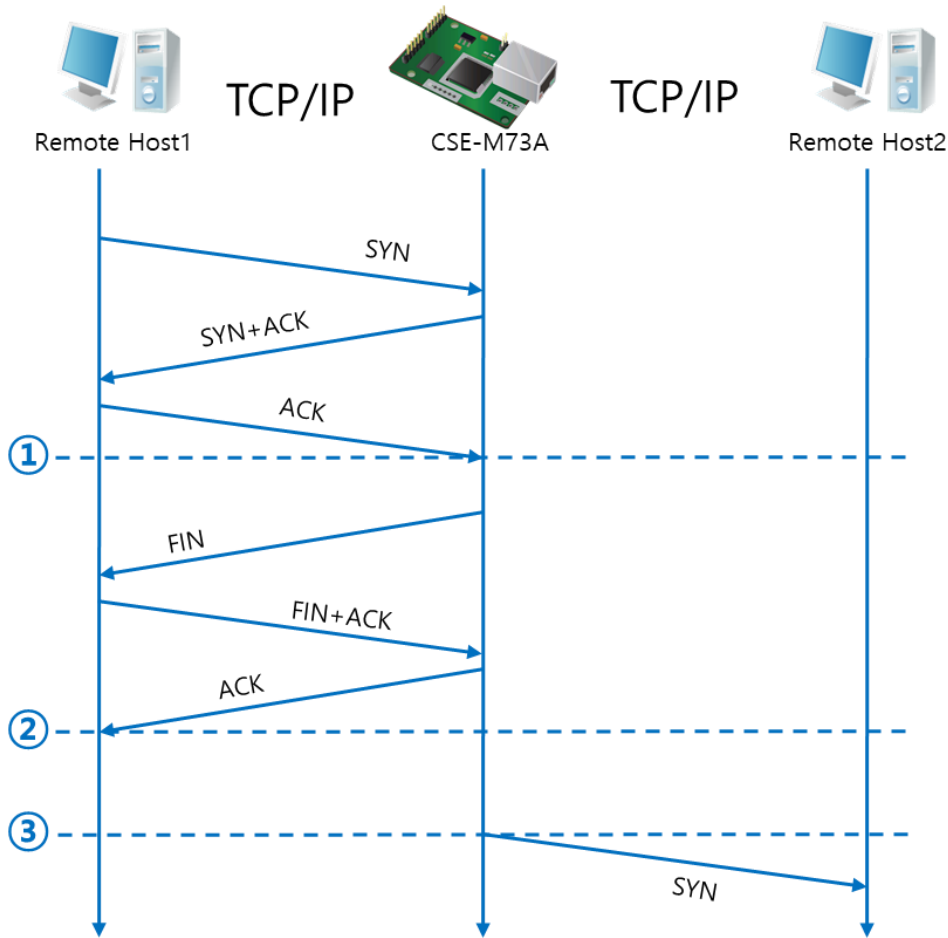


Figure 5-14 time chart for activating [TCP Server] option

Points	States
~	CSE-M73A is listening to connection requests
①	The connection has been established
~	CSE-M73A is on line and processes of the disconnection
②	The connection has been terminated
~	Both sides are offline
③	Sends TCP connection request segment

Figure 5-15 states of each points

The TCP Server / Client mode can be useful option by using [Event Byte] and [Timeout]. Note that only one TCP connection can be established at the same time, so users should consider setting [Timeout] properly.

5.3 AT Command

AT command is a mode which users control CSE-M73A with AT command like controlling modem. In this mode, active and passive TCP connections are available. And users are allowed to configure some environmental parameters with extended commands.

5.3.1 Key parameters

The configuration should be implemented via the serial port of CSE-M73A.

Commands	Description	Examples
+PLIP	Local IP Address	at+plip=10.1.0.1<CR>
+PLP	Local Port	at+plp=1470<CR>
+PRIP	Peer IP Address	at+prip=10.1.0.2<CR>
+PRP	Peer Port	at+prp=1470<CR>
+PDC	DHCP	at+pdc=1 (ON)<CR>
+PPE	PPPoE	at+ppe=1 (ON)<CR>
+PTO	Timeout	at+pto=10<CR>
+PWP	Store setting	at+pwp<CR>

Figure 5-16 some of extended commands for configuration

- Related items with IP Address and Local Port
Local port can be set as well as IP address related parameters like IP Address, Subnet Mask and Gateway IP Address.
- Peer Address / Peer Port
IP address and local port of a remote host are can be set.
- Type of assigning IP address: Manual, DHCP, PPPoE
Not only manual setting, also automatic assigning protocol (DHCP, PPPoE) are available.
- Others
Some of options including [Timeout] can be configured in this mode.

5.3.2 Examples

- TCP Server – setting parameters and passive connection

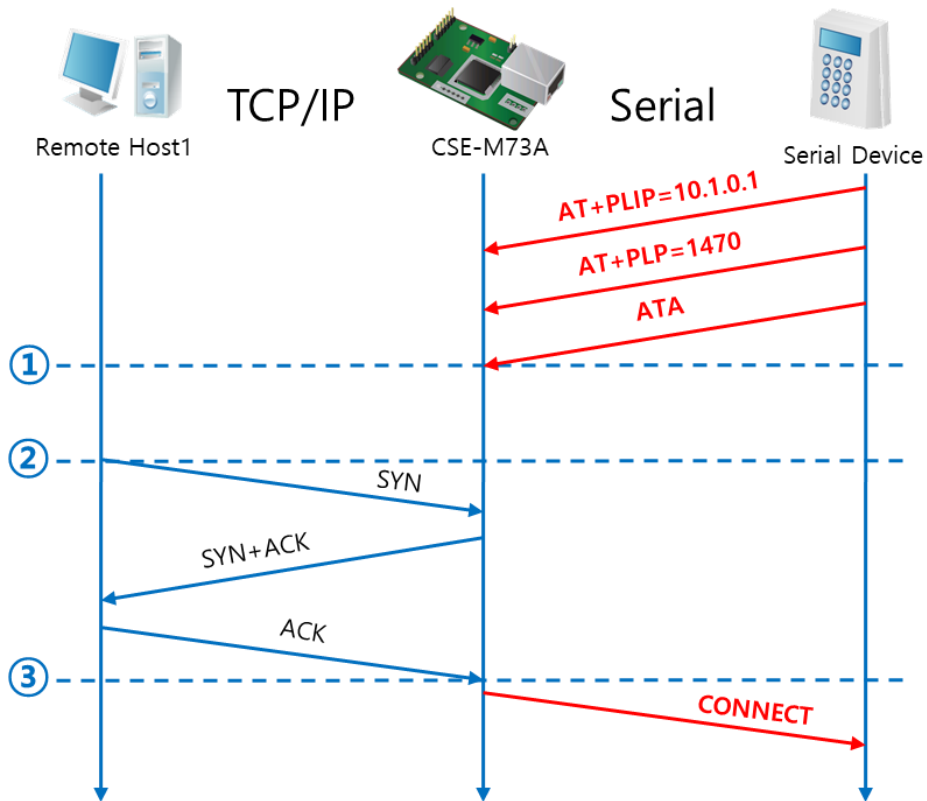


Figure 5-17 TCP passive connection

Points	States
~	Set parameters in the AT command mode
①	CSE-M73A listens TCP connection requests with the ATA command
~	CSE-M73A is listening TCP connection requests
②	A remote host has sent SYN segment to M73A
~	Processes of TCP connection
③	TCP connection has been established
~	CSE-M73A sends "CONNECT" message to the serial port

Figure 5-18 states of each points

☞ *Most of the response messages from the serial port of CSE-M73A are omitted on above figure.*

- TCP Client – setting parameters and active connection

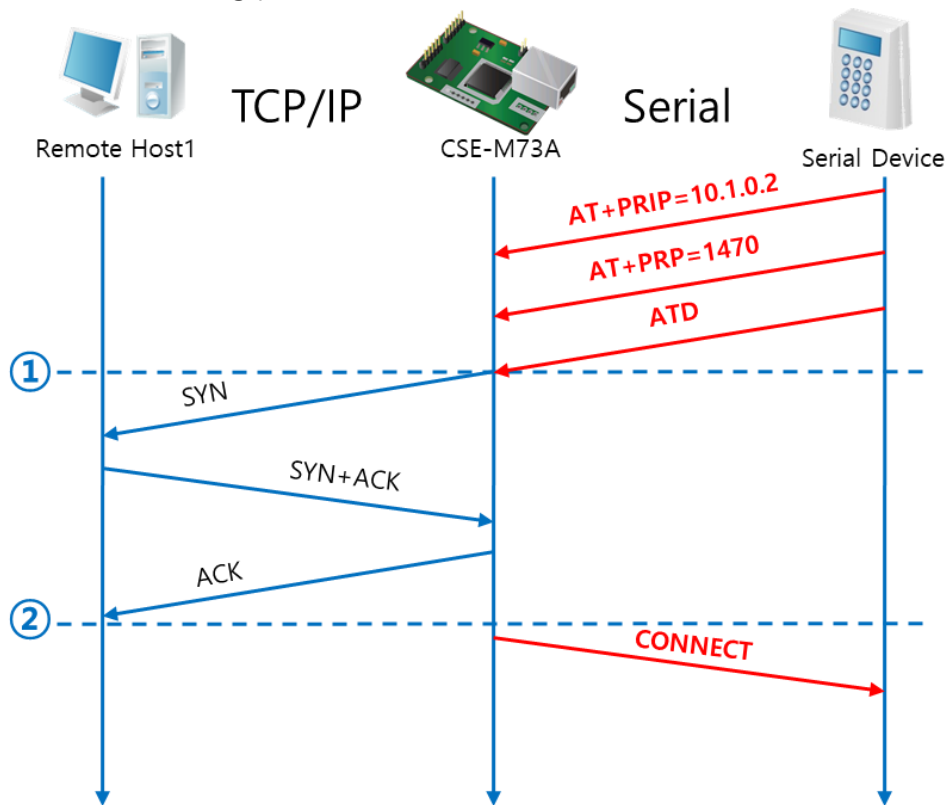


Figure 5-19 TCP Active connection

Points	States
~	Set parameters in the AT command mode
①	CSE-M73A sends a TCP connection request with the ATD command
~	Processes of TCP connection
②	TCP connection has been established
~	CSE-M73A sends "CONNECT" message to the serial port

Figure 5-20 states of each points

- Termination of online status – entering the AT command mode

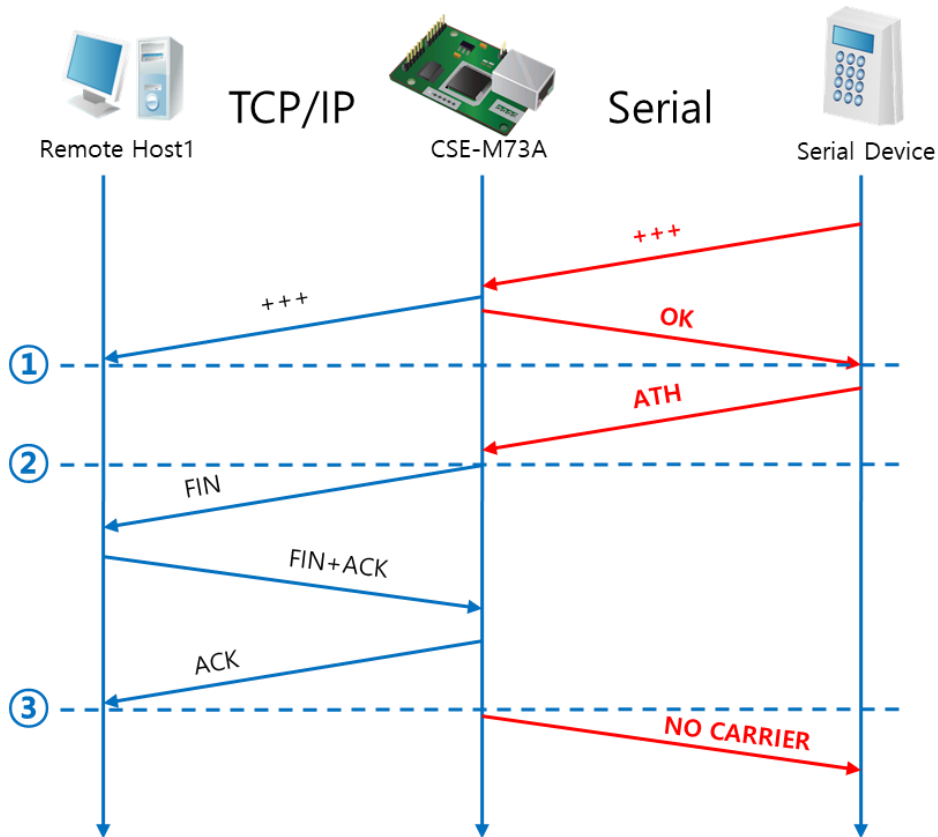


Figure 5-21 Termination of online status

Points	States
~	Keeps TCP connection
①	CSE-M73A enters the AT command mode with receiving "+++"
~	Keeps AC command mode
②	CSE-M73A terminates TCP connection with ATH command
~	Processes of TCP disconnection
③	TCP connection has been terminated
~	CSE-M73A sends "NO CARRIER" with disconnection

Figure 5-22 states of each points

CSE-M73A changes the mode to AT command, when receiving "+++" and sending "OK" message. In this state, the communication with remote host is not possible because CSE-M73A processes only AT command. Whenever you want to go back to online state (TCP connection), use "ATO" command.

☞ ***For more information about this, please refer to the "ATC-AT Command mode" document.***

5.4 UDP

UDP has no processes of connection. In this mode, data is sent in block units. Therefore, data that comes through CSE-M73A's serial port must be classified in block units to send it elsewhere.

5.4.1 Key parameters

- Block Size (Byte)

[Block Size (Byte)] means the size of a block in UDP mode. Its unit is byte. The size of bytes come into the serial port, CSE-M73A sends them as one block to the network. The maximum value could be 1460 bytes.

- Data Frame

[Data Frame] means the time for gathering data to make one block. Its unit is 10ms. If there are no transmission during the time which is set to this value, CSE-M73A sends gathered data in the buffer as one block to the network.

☞ ***Please set this value to 11 or higher values for correct operation.***

☞ ***Once one of the parameters is sufficient, the block size is decided as the condition.***

- Dynamic update of Peer host

If users set the value of [Peer Address] and [Peer Port] to 0, [dynamic update of peer host] function is activated. By using this function, CSE-M73A can communicate to multiple hosts without additional setting.

5.4.2 Examples

- Block Size: 5 bytes / Data Frame: 1s (100 by 10ms)

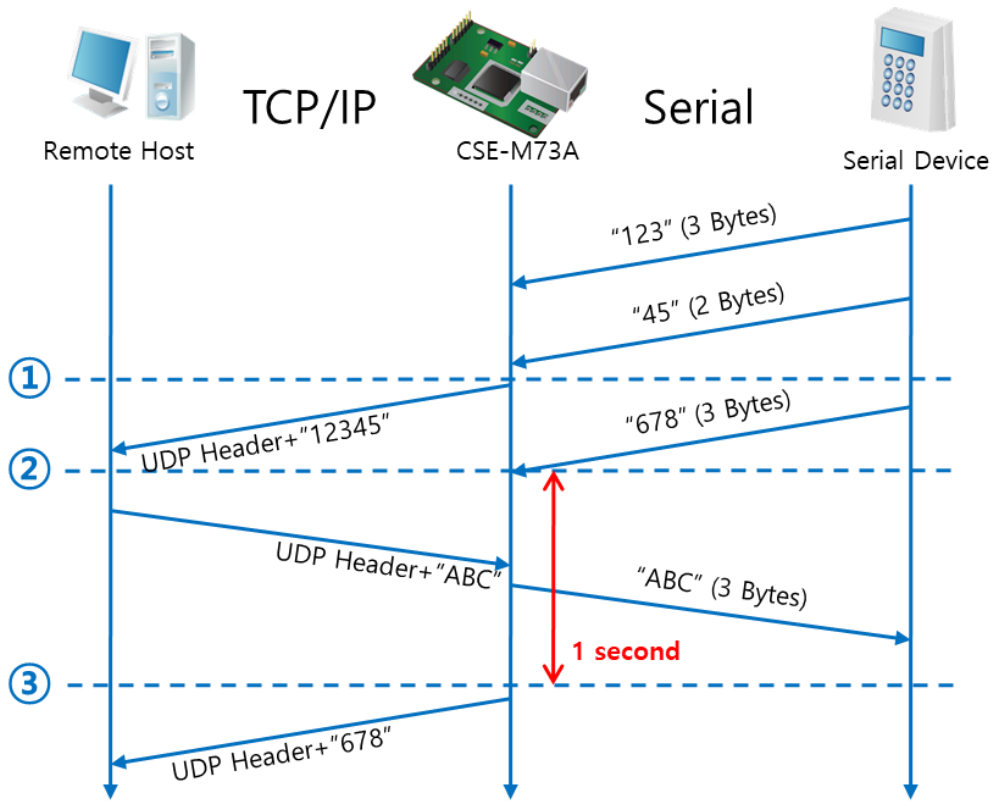


Figure 5-23 time chart for Block Size is 5 bytes, the data frame is 1s

Points	States
~	CSE-M73A is receiving data from the serial port
①	CSE-M73A Sends 5 bytes as one block based on the [Block Size]
~	Serial device sends data "678" to the CSE-M73A
②	Data "678" has arrived
~	CSE-M73A sends data from the remote host to the serial device
③	1 second has passed
~	CSE-M73A sends data "678" based on the [Data frame]

Figure 5-24 states of each points

- Dynamic Update of Peer host

This is a function that CSE-M73A automatically sets its peer host with information of the last packet which is received from network. In the packet, the source address and port number are used.

Parameters	Values
Peer Address	0 (None)
Peer Port	0

Figure 5-25 setting for [dynamic update of peer host] function

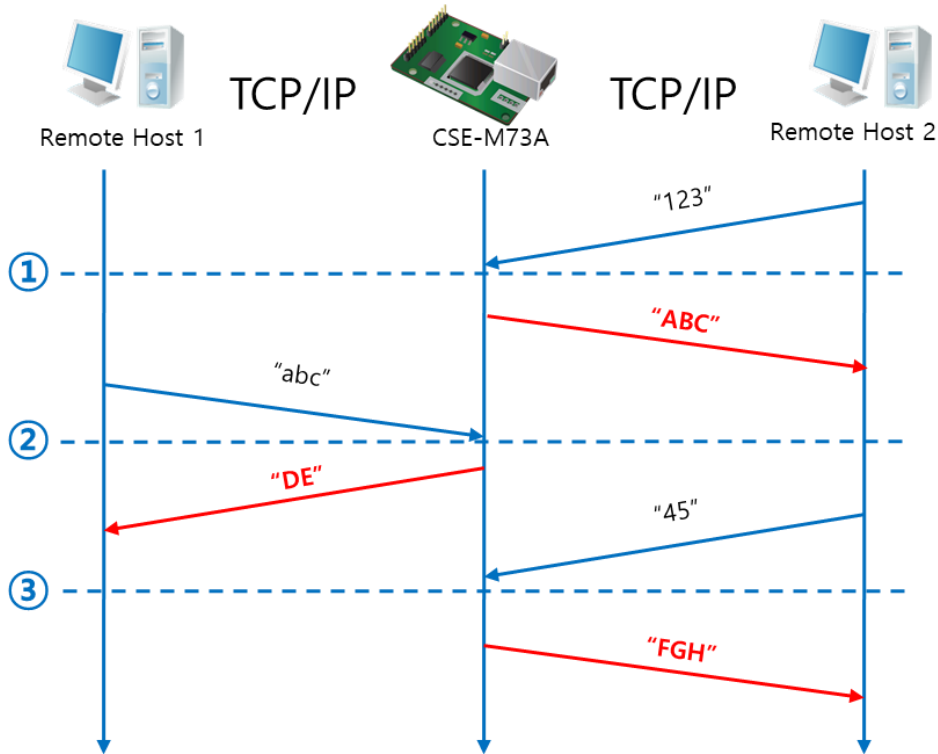


Figure 5-26 time chart for [dynamic update of peer host]

Points	States
~	Remote host 2 sends data to CSE-M73A
①	CSE-M73A sets host 2 to peer host
~	Remote host 1 sends data to CSE-M73A
②	CSE-M73A updates host 1 to peer host
~	Remote host 2 sends data again to CSE-M73A
③	CSE-M73A updates host 2 to peer host
~	CSE-M73A can communicate with remote host 2

Figure 5-27 states of each points

☞ **The data "ABC", "DE", "FGH" are from the serial port of CSE-M73A in the Fig 5-11.**

6 System Management

6.1 Upgrading Firmware

6.1.1 Firmware

Firmware is a type of software for operation of CSE-M73A. If there are needs for adding function or fixing bugs, the firmware is modified and released. We recommend that users keep use the latest released firmware.

6.1.2 Processes

- Downloading the latest released firmware
Download the newest firmware file. We update our homepage when a new firmware is released. You can find it on our website.
- Entering ISP mode
Enter ISP mode to download firmware file to CSE-M73A.
- Run a TFTP client and ready to send the F/W file
Run a TFTP client program. ezManager is equipped the client program. Click the [Change F/W / HTML] button.

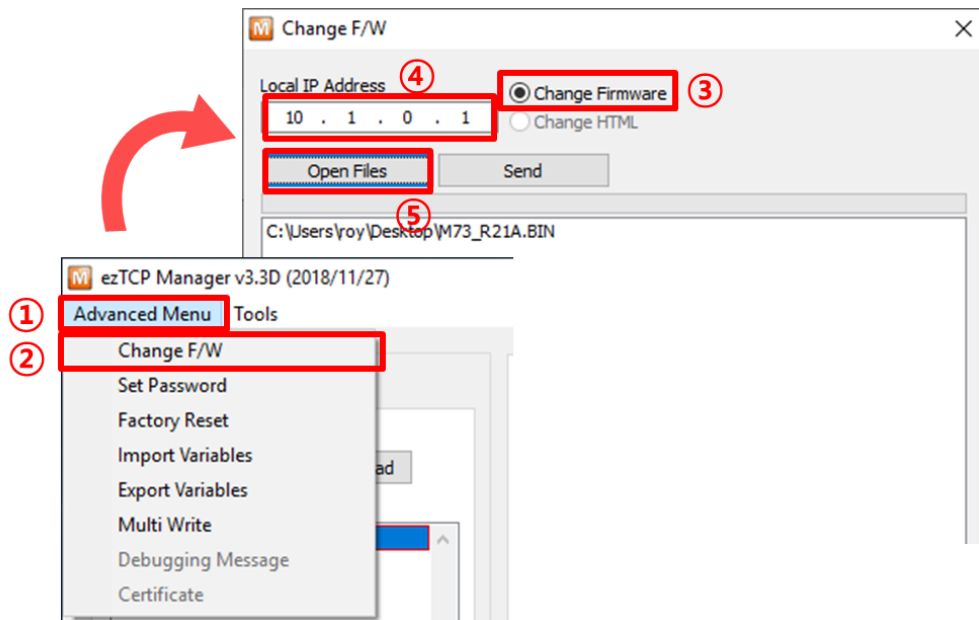


Figure 6-1 running TFTP client

- ① Click the [Advanced Menu].
- ② Click the [Change F/W] menu.

- ③ Select the [Change Firmware] radio button.
- ④ Input the IP address of CSE-M73A to the [Local IP Address] box.
- ⑤ Press the [Open Files] button and choose the firmware file.

● Checking firmware file and Sending

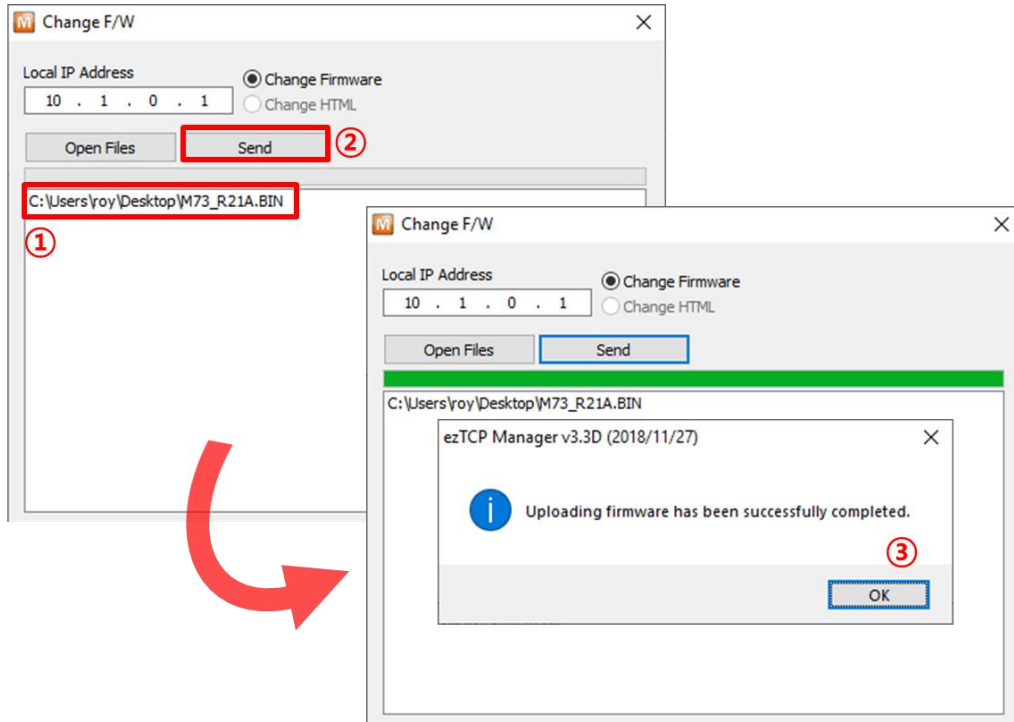


Figure 6-2 sending firmware file

- ① Check if the name and path of the firmware file are correct
- ② Click the [Send] button
- ③ Confirm the completed message

6.2 Status Monitoring

6.2.1 Using TELNET

Once the [TELNET] option is activated, users can remotely log in to CSE-M73A. If a password is set, users should input the password.

- ☞ **Starting with firmware version 2.0A, you can login by entering "sollae" without setting a password.**

After then, messages from CSE-M73A appear like Fig 6-3.

```
CSE-M73A Management Console v2.1A Sollae Systems
password: |
```

Figure 6-3 log in to CSE-M73A on TELNET

Followed commands let users check each state.

Command	Option	Description	Usage
st	net	Network Status	lsh>st net
	sio	Serial Port Status	lsh>st sio
	uptime	System Uptime	lsh>st uptime
sc	[OP1][OP2]	Session Control	lsh>sc com1 close
sd	[OP1][OP2]	Serial Data Capture	lsh>sd 100
		Serial Data Capturing Stops	lsh>sd 1 close

Table 6-1 commands for checking states

- st net

"st net" command displays present network states of all sessions.

```
lsh>st net
proto name      local address      peer address      sendq  state
-----
TCP    tty            10.1.0.1( 23)     10.6.0.50(12482)  140   ESTABLISHED
TCP    com1           10.1.0.1( 1470)   10.6.0.50(12486)   0   ESTABLISHED
lsh>
```

Figure 6-4 "st net command"

- st sio

"st sio" command displays the number of bytes for the serial port.

```
lsh>st sio
port fmax rbmax rxbuf txbuf rx_count tx_count
-----
com1  0    0    0    0        0        0
com2  0    0    0    0        0        0
lsh>
```

Figure 6-5 "st sio" command

- st uptime

"st uptime" command shows amount of time since M73A boots up.

```
lsh>st uptime
00:02:24.79 up 0 days
lsh>
```

Figure 6-6 "st uptime" command

- sc

"sc" command is used when users close a session. [OP1] means the name of session, and [OP2] should be "close".

```
lsh>sc com1 close
com1: closed
lsh>
```

Figure 6-7 "sc" command

☞ ***In case of the "sc" command you should use only small letters.***

- sd

"sd" command is for capturing serial data. [OP1] means name of the session, [OP2] means period, which has a 10ms unit, for the capture.

```
lsh>sd 1 100
com1 dump start
com1 dump buffering time : 1000ms
lsh>tx1 => 30 31 32 33 34 35 36 37
rx1 <= 30 31 32 33 34 35 36 37
| 01234567
| 01234567
```

Figure 6-8 "sd" command

6.2.2 Using ezManager

Status of CSE-M73A can be monitored by [Status] button on ezManager. By using the [Refresh Every 1 Second] option in the status window, the status is automatically updated in every second.

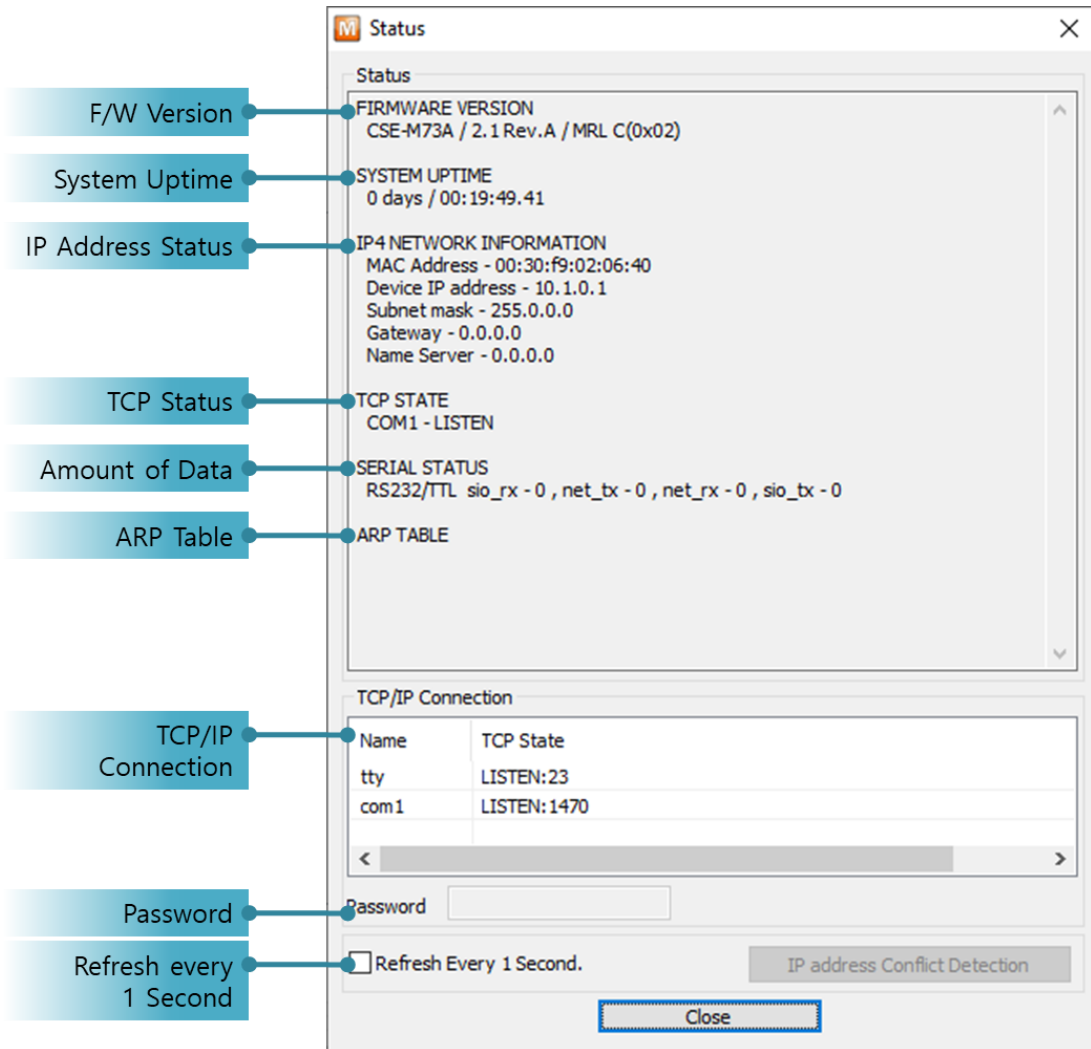


Figure 6-9 status window of ezManager

- **FIRMWARE VERSION**
The name of model name and the version of firmware are displayed here.
- **SYSTEM UPTIME**
Amount of time is displayed since CSE-M73A boots up.
- **IP4 NETWORK INFORMATION**
All information about related items with IP Address is shown here. It works even if the IP address is assigned from DHCP or PPPoE.

- TCP STATE

TCP status of each port is shown this section.

Message	Description
LISTEN	listening TCP connection
CLOSE	TCP connection is closed
SYN_SENT	Send "SYN" segment to make TCP connection
ESTABLISHED	When TCP connection is established
N/A	In UDP mode

Table 6-2 TCP STATE

- SERIAL STATUS

Amount of data in every buffer is displayed. The unit is byte.

Buffer	Description
sio_rx	The number of data which is received from the COM port
net_tx	The number of data which is sent to the remote host
net_rx	The number of data which is received from the remote host
sio_tx	The number of data which is sent to the COM port

Table 6-3 SERIAL STATUS

- ARP TABLE

This part shows ARP table on CSE-M73A. When TCP connection is established or UDP data communication is performed, the information of IP and MAC address is automatically stored in the ARP table. This information is held for 1 minute. When 50 seconds is passed, CSE-M73A starts broadcasting the ARP packet again. If there is no response until the time is 0, the information is removed. If there is response, the time is updated 60 seconds again.

- TCP/IP Connection

In this section, the same information with TCP STATE is displayed with IP address and port number. A difference is that users can terminate TCP connection. When right click on a session, a small pop-up window is created.

- Password

This text box is activated when CSE-M73A has a password. If users want to close TCP connection with right click of mouse on the session, this password has to be correctly filled.

- Refresh Every 1 Second.

If this option is checked, ezManager send query in every second.

6.2.3 Debugging Message

By using [Debugging] option, users can receive debugging messages from CSE-M73A on the network.

- Setting debugging option

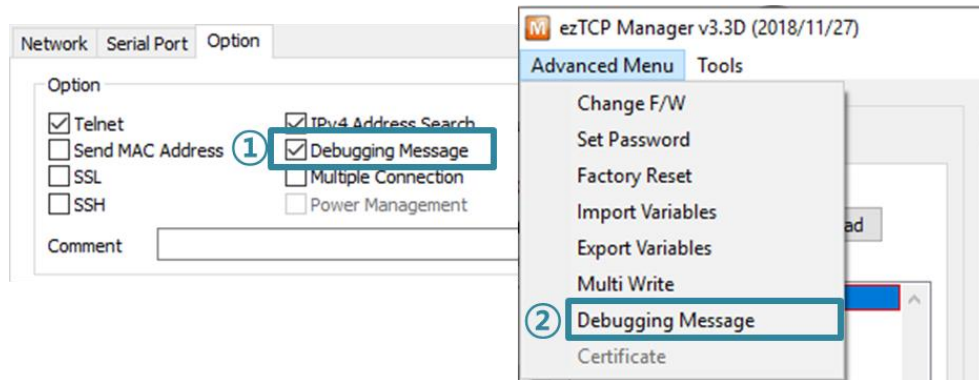


Figure 6-10 setting debugging option

- ① Check the [Debugging Message] option and press the [Write] button.
- ② Click the [Debugging Message] on the [Advanced Menu]. And then, the debugging message window is shown on your screen like figure below.

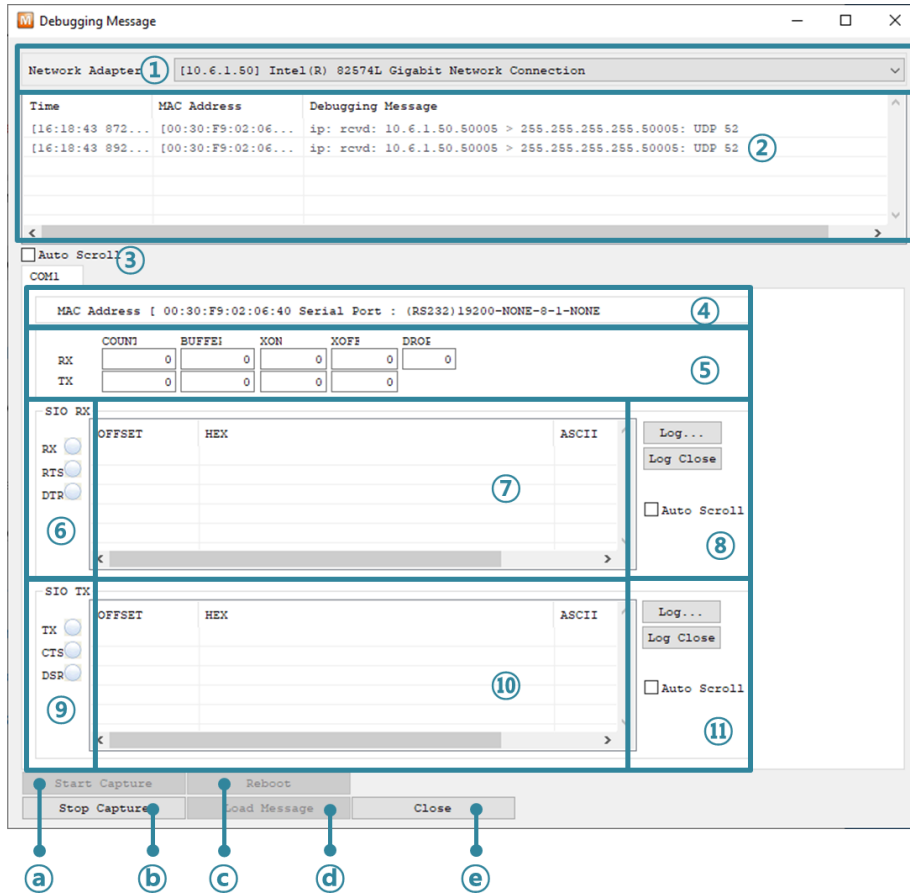


Figure 6-11 debugging message window

- ① Pull down menu for selecting a network adapter
- ② Place for showing received debugging messages from CSE-M73A
- ③ Auto update to display the latest captured file on the screen of ②
- ④ MAC Address Information of a selected message
- ⑤ ~ ⑪ Unavailable
- a) To start capturing debugging messages from CSE-M73A
- b) To stop capturing debugging messages from CSE-M73A
- c) Unavailable
- d) [Load Message] is for loading a debugging log file to display
- e) Closing debugging message window

☞ ***If you have problems with communication or connection, it can be helpful for us that you capture the debugging messages and send us to the file.***

☞ ***When you use [Debugging Message] function, it can cause network traffic because the messages are broadcasted to whole network. If you don't use it anymore, you should uncheck the function.***

7 Additional Functions

7.1 Access Restriction

7.1.1 Restriction of Access (ezTCP Firewall)

On the [Option] tab of ezManager, users can set restriction of access function with filtering MAC and IP address.

- Allowed MAC Address

If this option has a value of MAC address, the device which has the MAC address is only permitted to access.

- Allowed IP Address

This is for qualifying hosts with IP address or range of IP address. The range is defined by multiplying [IP address] and [Network Mask] in bit unit.

- Examples

IP Address	Network Mask	Allowed IP Address Range
10.1.0.1	255.0.0.0	10.1.0.1 ~ 10.255.255.254
10.1.0.1	255.255.255.0	10.1.0.1 ~ 10.1.0.254
192.168.1.4	255.255.255.255	192.168.1.4

Table 7-1 examples of defining allowed IP range

- Apply to ezManager

[Apply to ezManager] is for applying above two restrictions to ezManager functions like [Search], [Read], [Write] and etc.

7.1.2 Setting Password

A password can be used for protecting CSE-M73A from TELNET login or changing environmental parameters by hosts which are not qualified. The maximum length is 8 bytes of Alphabet or number.

☞ ***When you want to revoke all of these restrictions, operate CSE-M73A as ISP mode. In the mode, all restrictions are removable and communication with ezManager is revoked.***

7.2 Notify IP Change

CSE-M73A can be TCP server even though it assigned IP address automatically. Using [Notify IP Change] function, M73A sends its IP address with the host name to the designed server. There are 3 types- DDNS, TCP and UDP- for this service.

- Dynamic Domain Name Service (DDNS)

CSE-M73A supports DDNS service offered by DynDNS to manage its changed IP address as a host name. Because of this, you have to make an account and create host names on the website of DynDNS before use this.

☞ ***All about service usage of an account could be changed according to the policy of DynDNS.***

☞ ***Homepage of DynDNS: <https://dyn.com/>***

The screenshot shows a configuration window titled "Notify IPv4 Change". It contains several input fields and dropdown menus, each with a circled number indicating a step in the setup process:

- 1** Protocol: A dropdown menu set to "DDNS(dyndns.org)".
- 2** Interval: A text box containing "40320" with the unit "Minute(s)" next to it.
- Port**: A text box containing "0".
- Data Type**: A dropdown menu set to "ASCII".
- 3** DDNS ID: A text box containing "account".
- 4** DDNS Password: A text box filled with dots to mask the password.
- 5** Host Name(dyndns): A text box containing "yourhostname.dyndns.org".

Figure 7-1 setting DDNS

- ① Select the [DDNS(dyndns.org)]
- ② 40,320 is a fixed value
- ③ Input the ID of DDNS account
- ④ Input the password of the account
- ⑤ Input a host name which you create on your account

- TCP/UDP

In case you have an own server and want to manage the information about changed IP addresses, you allowed used TCP/UDP for using this option. The [Data Type] can be selected as ASCII or hexadecimal, and the [Interval] is available on configuration.

☞ ***For more information about this, please refer to "Notify IP Change" document.***

7.3 Sending MAC Address

[Sending MAC Address] is a function that CSE-M73A sends its MAC address to the remote host right after the connection is established. By using this function, a server can identify multiple devices with the information.

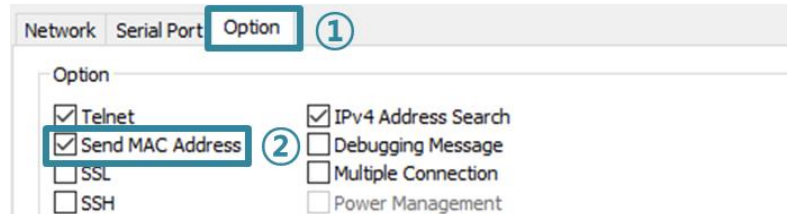


Figure 7-2 setting of Sending MAC Address function

- ① Move to the [Option] tab.
- ② Check the [Send MAC Address] option.

7.4 TELNET COM port Control Option (RFC 2217)

This option is for sending and receiving serial port states between two devices. Users can send and receive control signals like RTS/CTS when the states are changed.

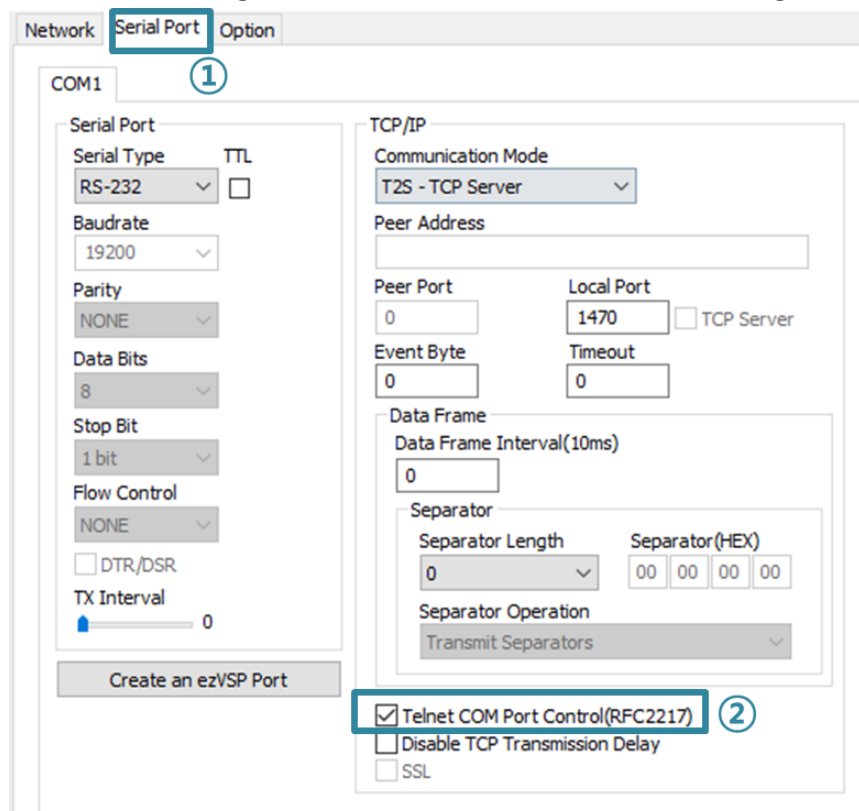


Figure 7-3 setting of TELNET COM Port Control option

- ① Move to the [Serial Port] tab.
- ② Check the [Telnet COM Port Control (RFC2217)] option.

☞ **If you want details about the [TELNET COM port Control Option] and [Sending MAC Address], please refer to "Telnet COM Port Control Option" and "Sending MAC Address Function" documents.**

7.5 Separator

Using this function, you can control the length of network packets by specific characters.

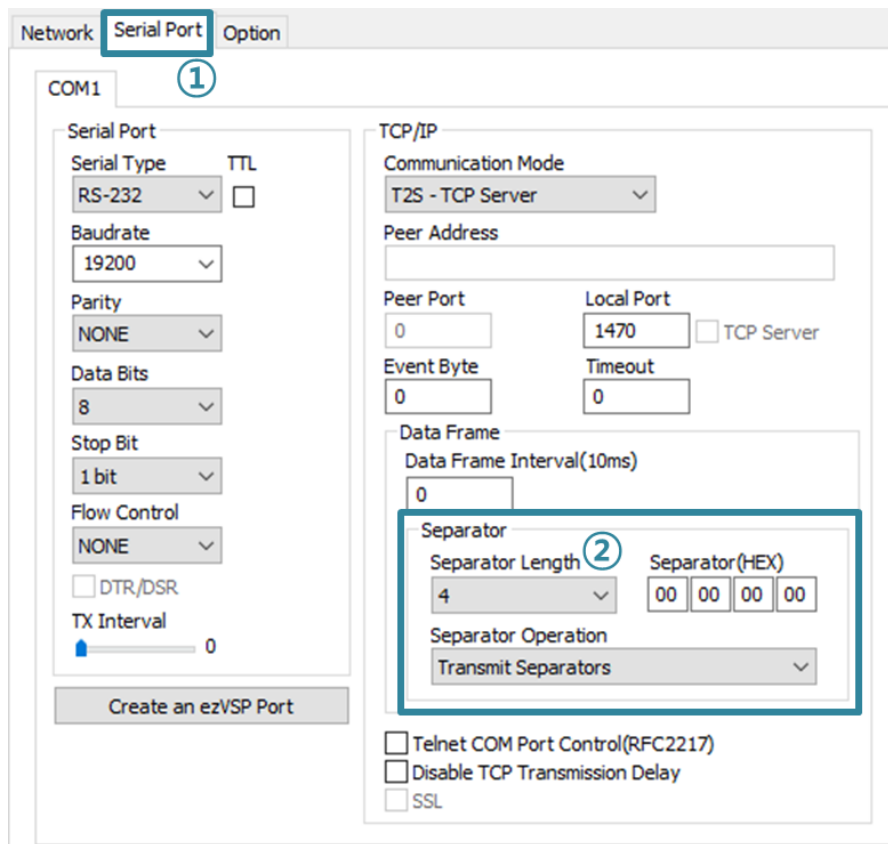


Figure 7-4 setting of separator

- ① Move to the [Serial Port] tab.
- ② Set the separator.

separator	options
Length	select the length between 0 ~ 4 bytes
Operation	Transmit Separators without additional bytes
	Transmit Separators + 1 byte
	Transmit Separators + 2 bytes

Table 7-2 separator

7.6 SSL (Secure Socket Layer)

Secure Socket Layer (SSL) is a security protocol over the Internet and widely used in many communication systems.

7.6.1 How to use as a TCP client

Just check the option on ezManager.

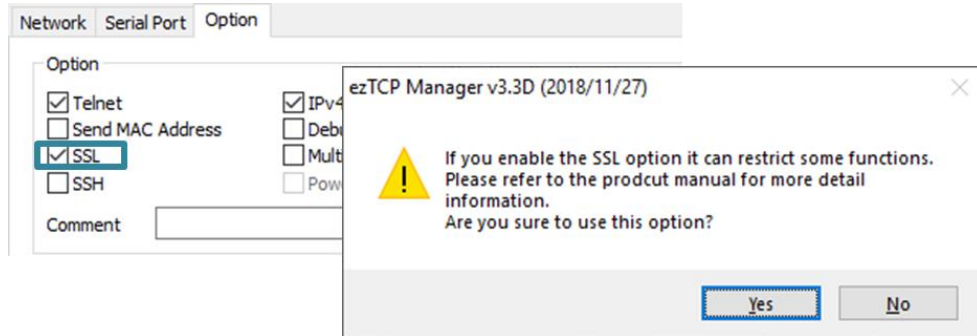


Figure 7-5 activation of the SSL option

☞ ***[Multiple Connection], [SSH] and [TELNET COM Port Control] options are unavailable while using [SSL] option.***

7.6.2 How to use as a TCP server

To use SSL option as a TCP server, you should create a certification.

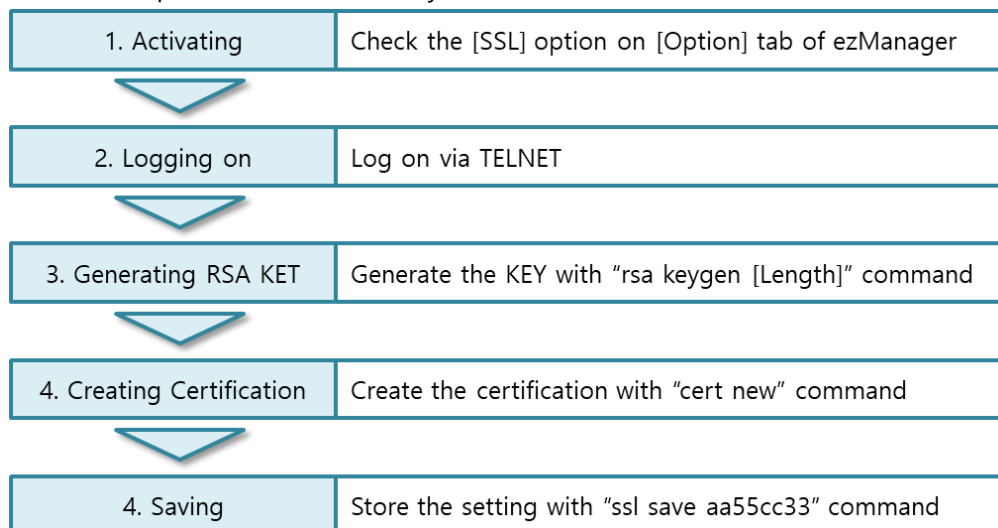


Figure 7-6 processes for SSH

☞ ***For the details about the SSL setting, please refer to "SSL Function Manual" document.***

7.7 SSH (Secure Shell)

Secure Shell (SSH) is a kind of logging on system of Linux and UNIX, which is intensified for the security.

7.7.1 How to use

Follow the below procedures

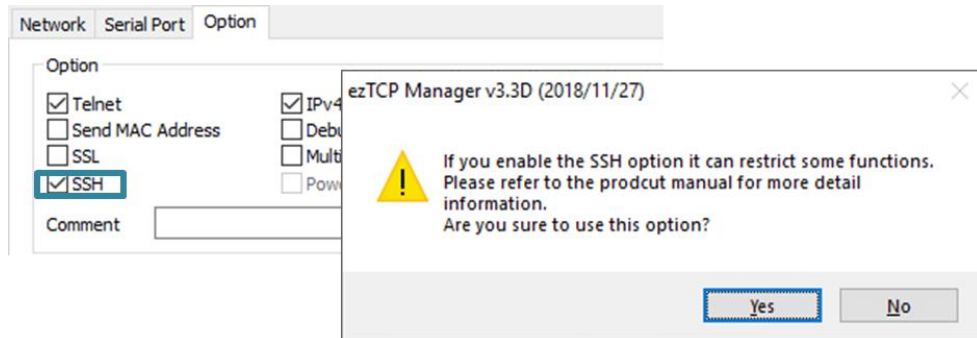


Figure 7-7 activation of the SSL option

☞ ***[Multiple Connection], [SSH] and [TELNET COM Port Control] options are unavailable and only TCP server can be used while using [SSL] option.***

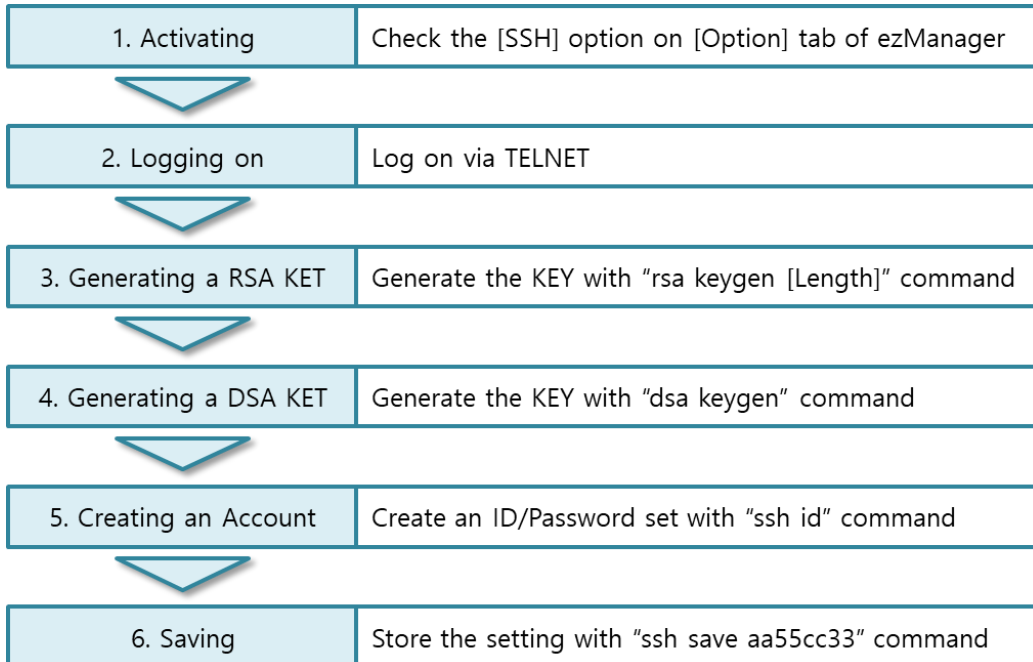


Figure 7-8 processes for SSH

☞ ***For the details about the SSH setting, please refer to "SSH Function Manual" document.***

7.8 Multiple Connection

[Multiple Connection] is for receiving and monitoring a device to multiple hosts in the same time. The maximum session number is 8 for the [Multiple Connection].

7.8.1 How to use

The option is available after activating the [Multiple Connection] on ezManager.

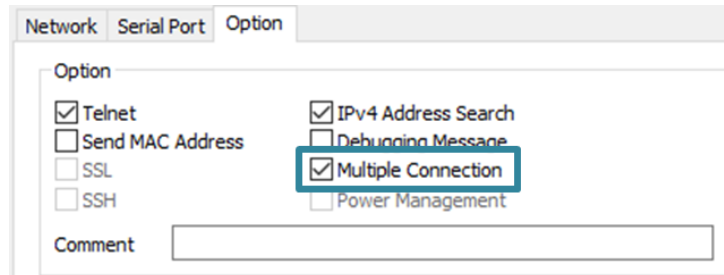


Figure 7-9 activation of the [Multiple Connection]

7.8.2 Diagram

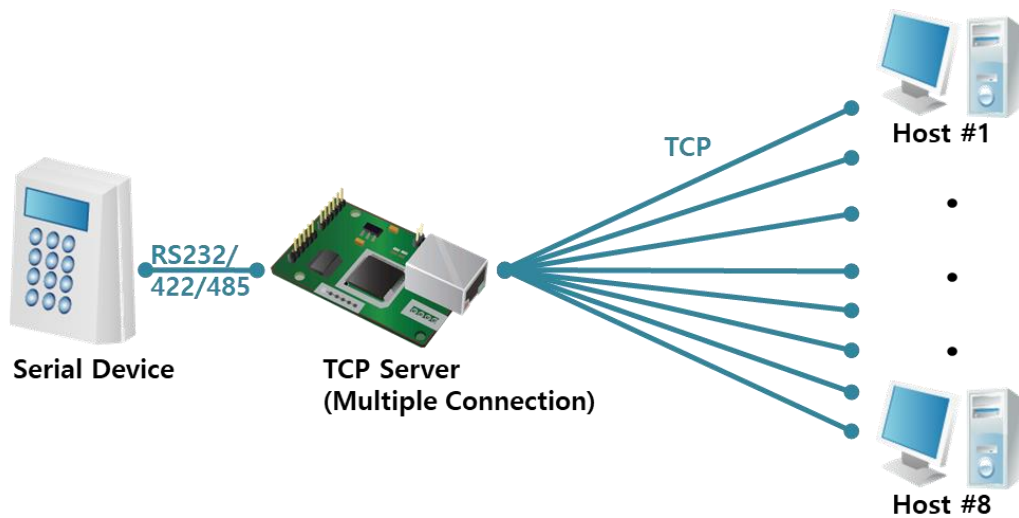


Figure 7-10 diagram for the [Multiple Connection]

- Data from each host are sent to the User's device via CSE-M73A
- Data from the User's device is sent to the all hosts(#1 ~ 8) via CSE-M73A

7.9 RS422, 485 and 3.3V Communication

For the RS422 or RS485 communication, you have to use JP4 and 5 of CSE-M73A. When using 3.3V level, JP3 can be used. To change another mode, the [Serial Type] option should be changed on ezManager.

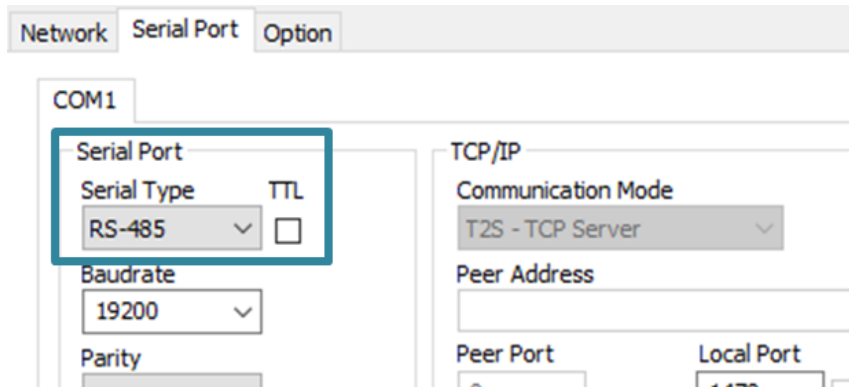


Figure 7-11 the [Serial Type] parameter

☞ *For reference, 3.3V communication is indicated as TTL in ezManager*

8 Self-Test in Trouble

When users are in trouble with CSE-M73A, make sure all the followed steps first.

8.1 Searching problem with ezManager

- Confirming types of configuration utility
CSE-M73A can be configured by ezManager.
- Stopping Firewall operation
Firewalls of personal computer or network block broadcast packets. Stop all the firewalls before searching CSE-M73A

☞ ***Most of vaccine programs have firewall functions so it can cause some trouble to search CSE-M73A. Stop these programs before the searching.***

- Stable supply of the power
Check if the power is supplied continually. If the power is constantly supplied, the red LED on the CSE-M73A's body will be ON.
- Connection with the network
Make sure that the network connection is fine including Ethernet cable. In this step, we recommend that users connect CSE-M73A with PC directly or in the same network hub.
- Checking options of restriction
In case that restriction of access is activated, the communication with ezManager can be impossible. When users are in this situation, make CSE-M73A operate in ISP mode.

8.2 Connection Problem over TCP/IP

- Checking parameters related with TCP/IP
When CSE-M73A has a private network IP address, personal computer's IP address has to be the same sub network. Check if the IP address and local port number are correct. In case of a fixed IP address, the subnet mask, gateway IP address and DNS IP address should be configured.

TCP Server side	TCP Client side
Local IP Address, Local Port, Subnet Mask, Gateway IP Address, DNS IP Address, DDNS option	Local IP Address, Peer Address, Peer Port, Subnet Mask, Gateway IP Address, DNS IP Address,

Table 8-1 major parameters related with TCP/IP

- PING Test
Confirm the connection over the network by PING test. If the CSE-M73A doesn't send any reply from the request, check the network environment.
- Firewall
In case the networks which need strong security, the access may be denied by their firewall. Under this circumstance, users should ask the person in charge of their network to release ports which will be used. (Ex: TCP 1470, UDP 50005)
- Operation Mode
TCP connection is not possible when CSE-M73A is operating in the ISP or Serial Configuration mode.
- Communication Mode
To make TCP connection, both a server and client should exist. If there are only servers or clients, TCP connection can't be established.
- ezTCP Firewall
When users set the ezTCP firewall with MAC and IP address, any hosts can't be reachable to it except for the hosts which have the allowed MAC and IP address. Inactivate the option or check the setting is correct.
- Checking the TCP status
TCP is a protocol connected one to one without multiple connection function. Because of this, if a device is on TCP connection, other requests are denied. If users are in this situation, check the network status by connecting on TELNET or using ezManager.

8.3 Data Communication Problem on the Serial

- Connection of Pins

Check if the connection of each pin is right. Using cables, users choose the right type of cable which is suitable for the device. Transmit Data (TXD) pin should be connected with Receive Data (RXD) pin. Look at the figure 8-1.

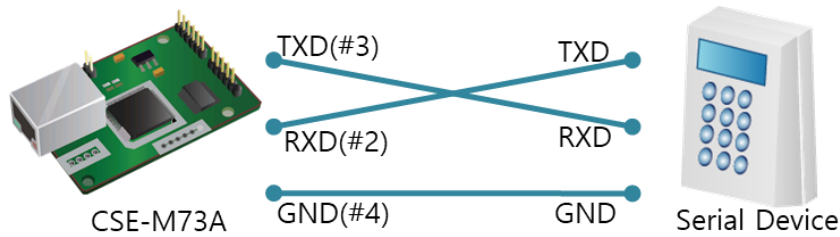


Figure 8-1 RS232 connection

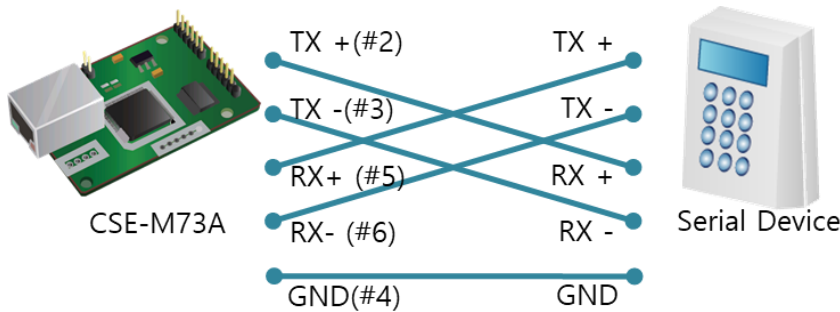


Figure 8-2 RS422 connection

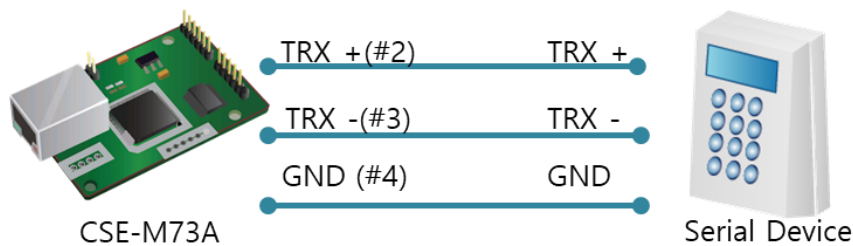


Figure 8-3 RS485 connection

- Setting parameters

Check if all the serial port parameters like Baud Rate, Data bit, Stop bit and Parity are properly set.

☞ **Contact us if you have any questions about above steps or our products.**

9 Related material

9.1 Technical Documents

You can find the technical documents at our website.

- Datasheet
- IP Change Notification (DDNS)
- How to use SSL
- How to use SSH
- Sending MAC Address function
- Telnet COM Port Control Option
- etc.

9.2 Smart phone application

- ezManager (iOS)
- ezManager (Android)
- TCP/IP Console (iOS)
- TCP/IP Client (Android)

10 Technical Support and Warranty

10.1 Technical Support

If you have any question regarding operation of the product, visit Customer Support FAQ corner and the message board on Sollae Systems' web site or send us an email at the following address:

- E-mail: support@eztcp.com
- Website: <https://www.eztcp.com/>

10.2 Warranty

10.2.1 Refund

Upon the customer's request to refund the product within two weeks after purchase, Sollae Systems will refund the product.

10.2.2 Free Repair Services

For product failures occurring within two years after purchase, Sollae Systems provides free repair services or exchange the product. However, if the product failure is due to user's fault, repair service fees will be charged or the product will be replaced at user's expense.

10.2.3 Charged Repair Services

For product failures occurring after the warranty period (two years) or resulting from user's fault, repair service fees will be charged and the product will be replaced at user's expense.

11 Precaution and Exemption from Liability

11.1 Precaution

- Sollae Systems is not responsible for product failures occurring due to user's alternation of the product.
- Specifications of the product are subject to change without prior notice for performance improvement.
- Sollae Systems does not guarantee successful operation of the product if the product was used under conditions deviating from the product specifications.
- Reverse engineering of firmware and applications provided by Sollae Systems is prohibited.
- Use of firmware and applications provided by Sollae Systems for purposes other than those for which they were designed is prohibited.
- Do not use the product in an extremely cold or hot place or in a place where vibration is severe.
- Do not use the product in an environment in which humidity is high or a lot of oil exists.
- Do not use the product where there is caustic or combustible gas.
- Sollae Systems does not guarantee normal operation of the product under the conditions a lot of noise exists.
- Do not use the product for a purpose that requires exceptional quality and reliability relating to user's injuries or accidents – aerospace, aviation, health care, nuclear power, transportation, and safety purposes.
- Sollae Systems is not responsible for any accident or damage occurring while using the product.

11.2 Exemption from Liability

11.2.1 English version

In no event shall Sollae Systems Co., Ltd. And its distributors be liable for any damages whatsoever (including, without limitation, damages for loss of profit, operating cost for commercial interruption, loss of information, or any other financial loss) from the use or inability to use the CSE-M73A even if Sollae Systems Co., Ltd. Or its distributors have been informed of such damages.

The CSE-M73A is not designed and not authorized for use in military applications, in nuclear applications, in airport applications or for use in applications involving explosives, or in medical applications, or for use in security alarm, or for use in a fire alarm, or in applications involving elevators, or in embedded applications in vehicles such as but not limited to cars, planes, trucks, boats, aircraft, helicopters, etc..

In the same way, the CSE-M73A is not designed, or intended, or authorized to test, develop, or be built into applications where failure could create a dangerous situation that may result in financial losses, damage to property, personal injury, or the death of people or animals. If you use the CSE-M73A voluntarily or involuntarily for such unauthorized applications, you agree to subtract Sollae Systems Co., Ltd. And its distributors from all liability for any claim for compensation.

Sollae Systems Co., Ltd. And its distributors entire liability and your exclusive remedy shall be Sollae Systems Co., Ltd. And its distributors option for the return of the price paid for, or repair, or replacement of the CSE-M73A.

Sollae Systems Co., Ltd. And its distributors disclaim all other warranties, either expressed or implied, including, but not limited to, the implied warranties of merchantability and fitness for a particular purpose, with respect to the CSE-M73A including accompanying written material, hardware and firmware.

11.2.2 French version

- Documentation

La documentation du boîtier CSE-M73A est conçue avec la plus grande attention. Tous les efforts ont été mis en œuvre pour éviter les anomalies. Toutefois, nous ne pouvons garantir que cette documentation soit à 100% exempt de toute erreur. Les informations présentes dans cette documentation sont données à titre indicatif. Les caractéristiques techniques peuvent changer à tout moment sans aucun préavis dans le but d'améliorer la qualité et les possibilités des produits.

- Copyright et appellations commerciales

Toutes les marques, les procédés, les références et les appellations commerciales des produits cités dans la documentation appartiennent à leur propriétaire et Fabricant respectif.

- Conditions d'utilisations et limite de responsabilité

En aucun cas Sollae Systems Co., Ltd. ou un de ses distributeurs ne pourra être tenu responsable de dommages quels qu'ils soient (intégrant, mais sans limitation, les dommages pour perte de bénéfice commercial, interruption d'exploitation commerciale, perte d'informations et de données à caractère commercial ou de toute autre perte financière) provenant de l'utilisation ou de l'incapacité à pouvoir utiliser le boîtier CSE-M73A, même si Sollae Systems Co., Ltd. ou un de ses distributeurs a été informé de la possibilité de tels dommages.

Le boîtier CSE-M73A est exclusivement prévu pour un usage en intérieur, dans un environnement sec, tempéré (+10 °C à +40°C) et non poussiéreux. Le boîtier CSE-M73A n'est pas prévu, ni autorisé pour être utilisé en extérieur, ni de façon embarquée dans des engins mobiles de quelque nature que ce soit (voiture, camion, train, avion, etc...), ni en milieu explosif, ni dans des enceintes nucléaires, ni dans des ascenseurs, ni dans des aéroports, ni dans des enceintes hospitaliers, ni pour des applications à caractère médical, ni dans des dispositifs de détection et d'alerte anti-intrusion, ni dans des dispositifs de détection et d'alerte anti-incendie, ni dans des dispositifs d'alarme GTC, ni pour des applications militaires.

De même, le boîtier CSE-M73A n'est pas conçu, ni destiné, ni autorisé pour expérimenter, développer ou être intégré au sein d'applications dans lesquelles une défaillance de celui-ci pourrait créer une situation dangereuse pouvant entraîner des pertes financières, des dégâts matériel, des blessures corporelles ou la mort de personnes ou d'animaux. Si vous

utilisez le boîtier CSE-M73A volontairement ou involontairement pour de telles applications non autorisées, vous vous engagez à soustraire Sollae Systems Co., Ltd. et ses distributeurs de toute responsabilité et de toute demande de dédommagement.

En cas de litige, l'entière responsabilité de Sollae Systems Co., Ltd. et de ses distributeurs vis-à-vis de votre recours durant la période de garantie se limitera exclusivement selon le choix de Sollae Systems Co., Ltd. et de ses distributeurs au remboursement de votre produit ou de sa réparation ou de son échange. Sollae Systems Co., Ltd. et ses distributeurs démentent toutes autres garanties, exprimées ou implicites.

Tous les boîtiers CSE-M73A sont testés avant expédition. Toute utilisation en dehors des spécifications et limites indiquées dans cette documentation ainsi que les court-circuit, les chocs, les utilisations non autorisées, pourront affecter la fiabilité, créer des dysfonctionnements et/ou la destruction du boîtier CSE-M73A sans que la responsabilité de Sollae Systems Co., Ltd. et de ses distributeurs ne puissent être mise en cause, ni que le boîtier CSE-M73A puisse être échangé au titre de la garantie.

- Rappel sur l'évacuation des équipements électroniques usagés

Le symbole de la poubelle barré présent sur le boîtier CSE-M73A indique que vous ne pouvez pas vous débarrasser de ce dernier de la même façon que vos déchets courants. Au contraire, vous êtes responsable de l'évacuation du boîtier CSE-M73A lorsqu'il arrive en fin de vie (ou qu'il est hors d'usage) et à cet effet, vous êtes tenu de le remettre à un point de collecte agréé pour le recyclage des équipements électriques et électroniques usagés. Le tri, l'évacuation et le recyclage séparés de vos équipements usagés permettent de préserver les ressources naturelles et de s'assurer que ces équipements sont recyclés dans le respect de la santé humaine et de l'environnement. Pour plus d'informations sur les lieux de collecte des équipements électroniques usagés, contacter votre mairie ou votre service local de traitement des déchets.

12 History

Date	Version	Comments	Author
2020.04.01.	1.0	○ Created	Roy LEE